

Facilities Weekly Report

Volume II, Issue 62

Week of September 14-18, 2015

MEP Bid Package #1 - Lee High School

TDR Contractors Inc.:

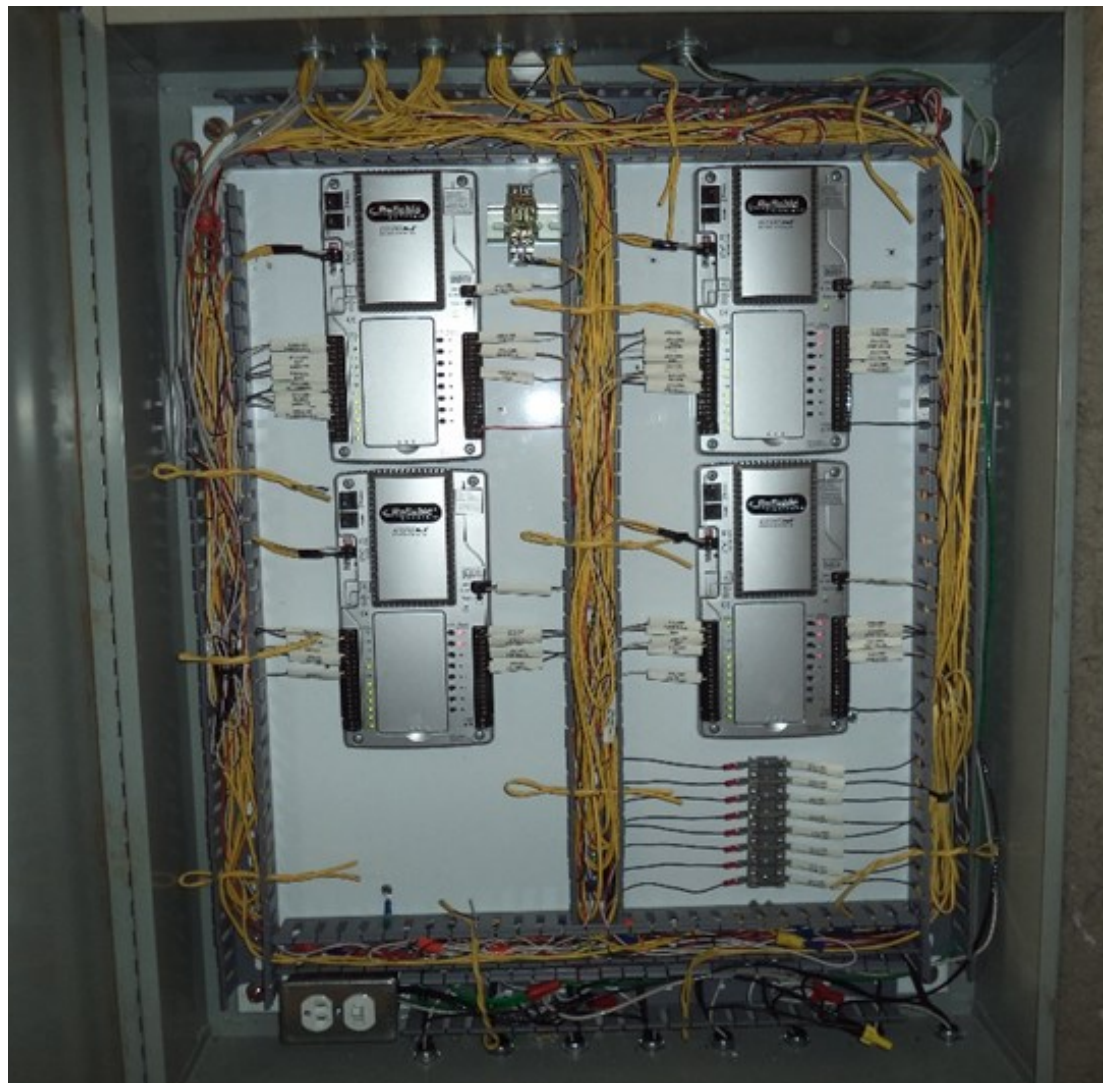
All major pieces of air conditioning equipment have been installed and started. Work is continuing on the conversion of the building automation controls to the new DDC system that is replacing the remaining pneumatic controls system.

Bond

R. Brown– Senior Project Inspector

In this issue:

MEP Bid Pkg #1 Lee High School	Cover
Lee High School Window Replacement	2
Bañuelos Signal Light	3
District Wide Elevator Renovations	3



Lee High School Window Replacement

Comex:

Interior finishes for the windows were completed prior to this classroom moving back in.

Bond

R. Brown– Senior Project Inspector



Bañuelos Signal Light

Marshall Construction:

The signal light installation is complete and in the process of being handed off to the Harris County Traffic Division for control of the signals.

Bond

R. Brown— Senior Project Inspector



District Wide Elevator Renovations

KONE Inc.:

All the major component replacement has been completed. Interior finishes replacement or refinishes are complete with the exception of Sterling High School commons' elevator interior finish. This remaining work is scheduled to be completed within two weeks.

Bond

R. Brown— Senior Project Inspector



Facilities Planning & Construction
3401 N. Main
Baytown, Texas 77521
Phone: 281-425-3600
Fax: 281-420-5140
E-mail: brenda.garcia@gccisd.net

Staff

...

Asst. Director:
Brenda Garcia

Project Manager:
Bruce Riggs

Senior Project Inspector:
Ray Brown

Project Inspectors:
Carl Burg
Tom Ortman

Pending Projects:

- Data Center
-Design development phase is underway.
- GCM Wing Addition^B
-The CSP is currently being advertised.
- Natatorium^B
- Stallworth Handrails
-The contractor is manufacturing the handrails.
- Stuart/Kilgore Repurpose^B
-The design development phase is underway.
- Transportation Center^B
-Site has been approved.
- Travis Parking^{NB}

B- Bond
NB- Non Bond

