



# Intermittent Report

December 1, 2022

## Index

MEP #1 at Sterling HS	Cover
Lee HS & Gentry JS Fine Arts	Cover
Projects' Status	2

## MEP #1 at Sterling H.S.

### Project Notes:

- Painting underway at Fine Arts classrooms
- Carpet removal and installation underway at Band Hall
- The City of Baytown to conduct final inspection on Dec. 2nd
- Contractor beginning to demobilize; job trailer to be hauled off by the end of the month



Painting complete in Orchestra

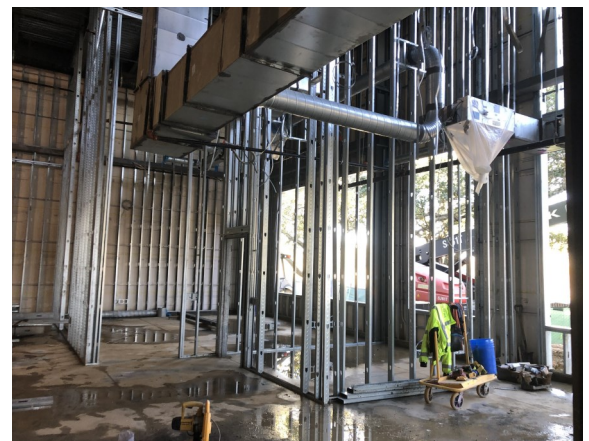
EMA Engineering

Bartlett Cocke Construction

## Lee H.S. & Gentry J.S. Fine Arts

### Project Notes:

- Installation of new RTU for Gentry JS complete
- Second level concrete placement complete at Lee HS
- Exterior sheathing and weathering proofing is underway at Lee HS
- Interior installation of cold form metal stud framing is underway at Lee HS



Metal stud installation at Lee HS

GCCISD  
Facilities Planning and  
Construction

LAN  
Program Managers



Pfluger

Marshall Construction

## Projects' Status

### **Districtwide Roof Replacement - Phase 2**

- New skylight at the Administration Building is in production
- New standing seam metal panels for Stephen F. Austin ES slated to be delivered on December 16th.

### **Fine Arts Renovation Project**

- Theater lighting package for junior schools is currently being priced

### **Education Service Center - Phase 2 Project**

- The architect has submitted exterior renderings for District approval
- 75% Construction Drawing submittal review slated for December 19th

### **Stallworth Stadium Field House**

- The architect has submitted schematic design drawings for end user review
- Project is scheduled to be issued for bid in late May, 2023

**Goose Creek CISD Series 2019 Bond Fund #632 Intermittent Financial Progress Report As of December 1, 2022**

PROJECT EXPENDITURES	Project Budget	Actual	Completion %	Estimated Final Cost	Estimated Cost	Budget Variance
<b><u>Construction</u></b>						
*Site Improvements	2,302,539	2,862,704	124%	2,862,704	124%	(560,165)
*SCTHS Phase III	19,672,546	18,512,569	94%	18,512,569	94%	1,159,977
ESC Phase I & Phase 2	10,950,727	10,779,083	98%	10,950,727	100%	-
Mechanical #1/Plbg. Upgrades #1	33,212,375	29,986,706	90%	33,212,375	100%	-
*Lee Auditorium	5,184,544	5,377,982	104%	5,538,644	107%	(354,100)
*San Jacinto Rplmt	27,001,097	26,111,215	97%	27,001,097	100%	-
*Jr High #6	56,930,190	54,091,145	95%	56,930,190	100%	-
*BAS Upgrades	2,866,171	-	0%	-	0%	2,866,171
*Construction Lab	2,880,000	3,303,620	115%	3,410,000	118%	(530,000)
*Mechanical #2	8,949,676	6,019,636	67%	6,019,636	67%	2,930,040
*Stuart CTHS P4	16,324,374	15,352,316	94%	16,324,374	100%	-
*Running Tracks	3,117,791	3,921,588	126%	3,756,291	120%	(638,500)
*Elementary #17	25,718,330	23,102,751	90%	25,718,330	100%	-
Lee & Gentry Fine Arts Buildings	11,617,016	6,674,035	57%	11,617,016	100%	-
Fine Arts Renov.	3,408,000	99,380	3%	3,408,000	100%	-
Roof Replacement	8,272,982	5,325,285	64%	8,272,982	100%	-
Field House	8,450,412	-	0%	8,450,412	100%	-
*BAS/Control Upgrades - ABM	6,112,290	6,112,290	100%	6,112,290	100%	-
*Water Conservation - ABM	764,579	730,410	96%	730,410	96%	34,169
*PRG MGMT - ABM	85,961	85,968	100%	85,968	100%	(7)
Program Management	7,450,761	7,438,102	100%	7,450,761	100%	-
FPC Expenditures	2,697,664	968,731	36%	2,697,664	100%	-
Non-FPC Bond Expenditures	210,975	191,480	91%	210,975	100%	-
<b>Total Construction Projects</b>	<b>\$ 264,181,000</b>	<b>\$ 227,046,995</b>	<b>86%</b>	<b>\$ 259,273,415</b>	<b>98%</b>	<b>\$ 4,907,585</b>

\* Completed Project