



Goose Creek 2013 Bond Construction Report

- Dr. Randal K. O'Brien, Superintendent of Schools
- Dr. Melissa Duarte, Deputy Superintendent of Curriculum and Instruction
- Dr. Anthony Price, Deputy Superintendent of Administrative Services
- Brenda Garcia, Director of Facilities Planning and Construction
- Bruce R. Riggs, Project Manager
- Ed Martir- Senior Project Inspector, Tom Ortman - Project Inspector, Carl Burg - Project Inspector
- LAN Team (JP Grom, Erwin Enojado, Terre Musgrove, John Carey, Clement Medina, Downen Sims, Simon Penn)



Technology Progress



Final Report





Construction Progress



Final Report

Green Center – Tax, Truancy, & PD Offices





Green Center



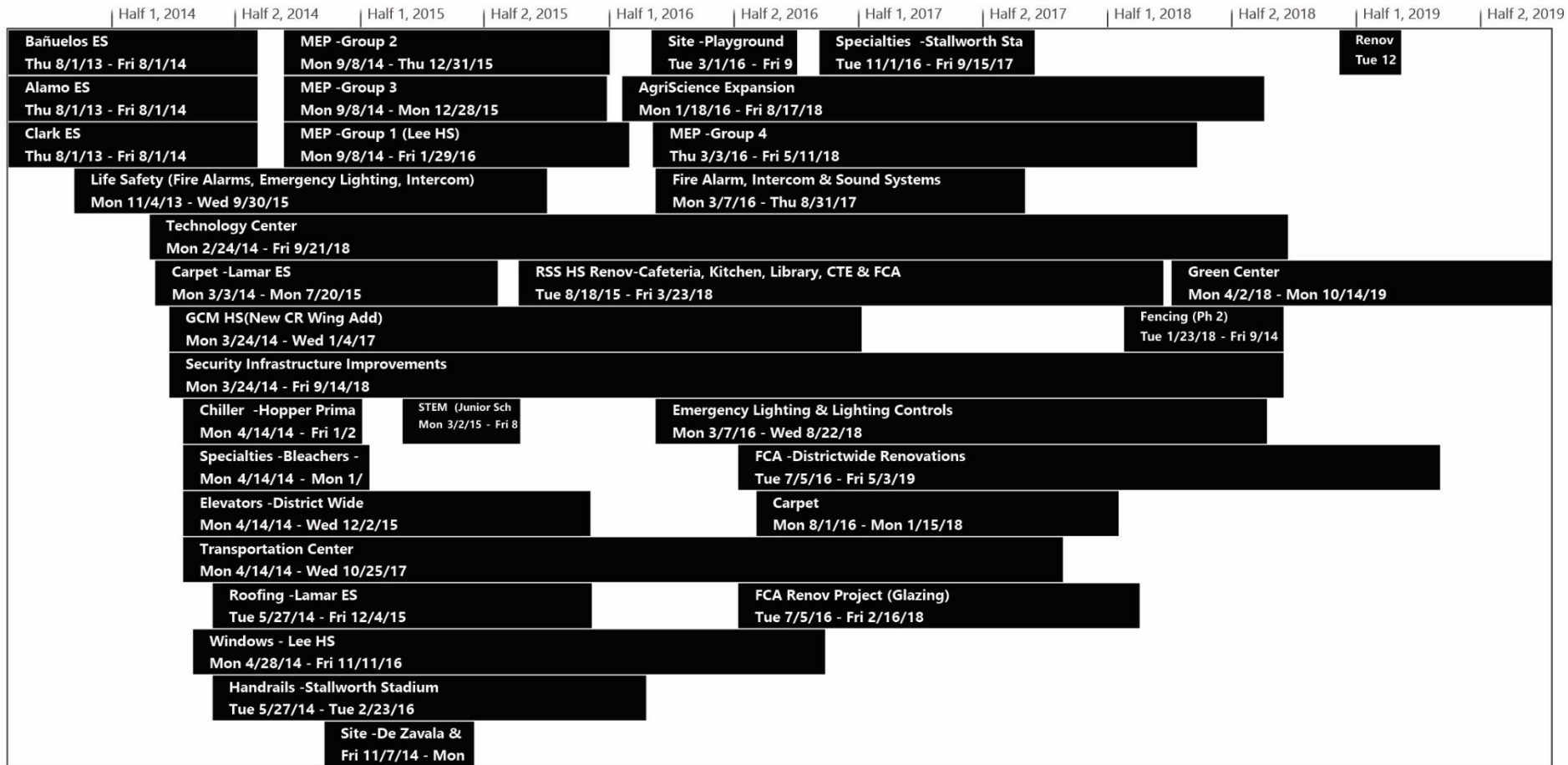


Green Center





Master Schedule





Financial Recap

Goose Creek CISD

2013 Bond Projects Financial Summary & Project Groupings

Project Description	Bond Budget	Actual Cost to Date	Remaining Planned Cost	Remaining Balance	% Actual Cost Spent As of May 26, 2020	% Complete-Construction As of May 26, 2020
Alamo ES	\$ 22,002,529	\$ 19,712,830	-	\$ 2,289,699	100%	100%
Banuelos ES	22,002,529	21,506,297	-	496,232	100%	100%
Clark ES	23,102,655	20,784,074	-	2,318,581	100%	100%
GCM HS -New Addition	7,348,422	9,436,775	-	(2,088,353)	100%	100%
Lee Drive Transportation	222,912	-	-	222,912	N/A	N/A
Transportation Center	10,756,358	14,499,266	-	(3,742,908)	100%	100%
Stallworth Stadium/Handrails/Structural	497,511	120,898	-	376,613	100%	100%
STEM LABS JR Schools	2,000,803	1,220,252	-	780,551	100%	100%
Technology	52,467,683	47,770,081	-	4,697,602	100%	100%
Computers-Stem&Bio Medical Labs	-	307,888	-	(307,888)	100%	100%
Fire and Life Safety	3,591,075	2,776,224	-	814,851	100%	100%
Conveyances	479,713	60,188	-	419,525	100%	100%
Elevators	2,430,786	922,809	-	1,507,977	100%	100%
Windows-Lee HS	3,100,057	1,574,138	-	1,525,919	100%	100%
Exterior Windows	93,450	1,326	-	92,124	100%	100%
Carpet - Districtwide	2,426,145	766,985	-	1,659,160	100%	100%
Interiors-Carpet-Lamar ES	674,932	167,996	-	506,936	100%	100%
Group 1 - MEP - Lee HS	11,012,268	9,071,178	-	1,941,090	100%	100%
Group 2 - MEP	9,709,227	10,484,196	-	(774,969)	100%	100%
Group 3 - MEP	8,300,039	10,674,177	-	(2,374,138)	100%	100%
Group 3 - MEP Hopper Chiller	314,591	225,918	-	88,673	100%	100%
Group 4 - MEP	2,425,176	1,070,150	-	1,355,026	100%	100%
MEP Bid Package(Special Prjct 1,2&3)		3,200	-	(3,200)	100%	100%
Crocket Fencing		84,980	-	(84,980)	100%	100%
Crocket Plumbing		401,220	-	(401,220)	100%	100%
Emergency Lighting & Lighting Controls	1,342,128	1,012,616	-	329,512	100%	100%

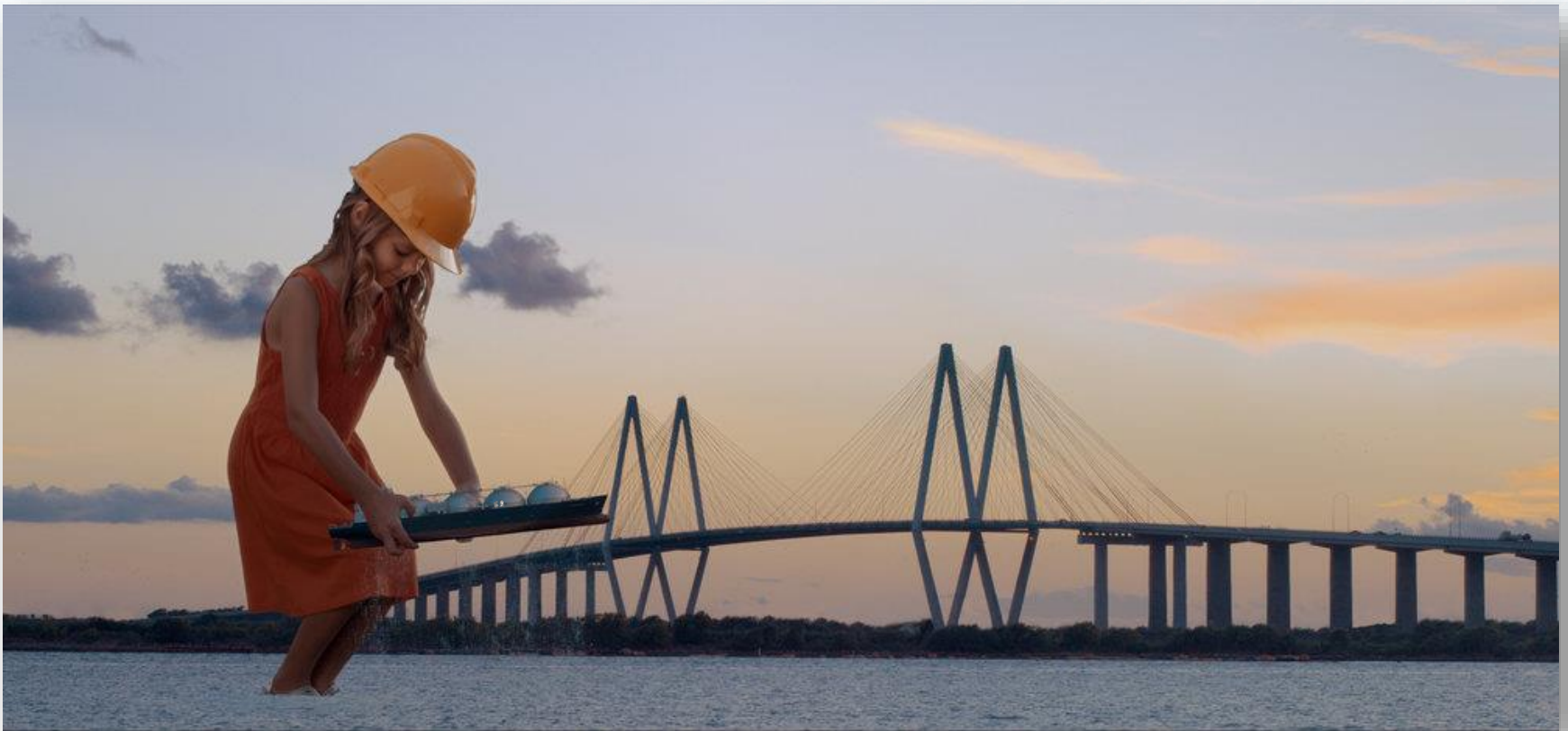


Financial Recap

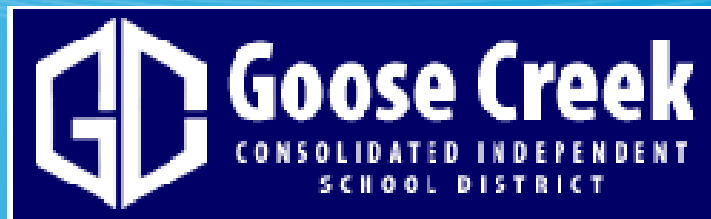
Project Description	Bond Budget	Actual Cost to Date	Remaining Planned Cost	Remaining Balance	% Actual Cost Spent As of May 26, 2020	% Complete-Construction As of May 26, 2020
Roofing-Lamar ES	458,628	517,438	-	(58,810)	100%	100%
Site - DeZavala Playground	446,269	133,395	-	312,874	100%	100%
Site - Lamar Playground	106,411	27,706	-	78,705	100%	100%
Site - Playground DC, AS, SJ, HO	376,428	293,654	-	82,774	100%	100%
Specialties-Bleachers-Lee HS	986,106	118,275	-	867,831	100%	100%
Specialties-Stallworth Bleachers	101,089	62,809	-	38,280	100%	100%
Fire Alarm, Intercom & Sound Systems	2,915,098	2,910,394	-	4,704	100%	100%
Fencing and Drive Control	188,432	153,270	-	35,162	100%	100%
Security Vestibules	9,348,176	7,771,700	-	1,576,476	100%	100%
Exterior Door/Card Access	49,626	49,626	-	0	100%	100%
Land - POINT Alternative	-	272,165	-	(272,165)	100%	100%
Sterling Electric Repair (FCA Improve)	-	36,900	-	(36,900)	100%	100%
Security Interior Door Locks	-	199,512	-	(199,512)	100%	100%
Camera System	1,260,650	1,260,575	-	75	100%	100%
Stuart Career & Kilgore Repurpose and Renov 10 Classrooms	14,317,132	12,270,007	130,000	1,917,125	99%	100%
Green Center	1,821,146	3,627,252	172,748	(1,978,854)	95%	100%
Lee West Parking Lot (FCA Improve)	-	1,093,023	-	(1,093,023)	100%	100%
FCA - Kitchen Equipment	3,130,444	1,931,885	-	1,198,559	100%	100%
FCA - Glazing	348,188	318,856	-	29,332	100%	100%
FCA - REL FCA & CTE	6,065,345	4,740,240	-	1,325,105	100%	100%
FCA - Districtwide Renovations	7,162,334	11,091,991	344,981	(4,274,638)	97%	100%
Agriculture Science Expansion	5,692,229	5,510,518	-	181,711	100%	100%
Technology Center	7,161,263	12,879,495	72,569	(5,790,801)	99%	100%
RS Sterling HS Renovations	11,495,361	12,855,862	-	(1,360,501)	100%	100%
Sterling HS Natatorium	35,657	47,654	-	(11,997)	100%	100%
MEP 1 2 & 3 special projects/payroll	-	108,209	-	(108,209)	100%	N/A
Program Management - LAN	7,772,999	5,967,413	-	1,805,586	100%	N/A
Program Management - GCCISD	-	2,615,446	-	(2,615,446)	100%	N/A
Bond Reimbursement	-	3,354,277	-	(3,354,277)	100%	100%
Total Bond Budget	\$ 267,540,000	\$ 266,875,205	\$ 720,298	\$ (55,503)	Total Spent	Total Program
Investment Earnings 2014-2020	3,157,622			3,157,622	99%	100%
Owner Controlled Insurance Program		(54,022)		54,022		
Total Grand Bond Budget	\$ 270,697,622	266,821,183	720,298	\$ 3,156,141	Est. Remaining Funds	

Dissolution of 2013 Bond CBAC

HERE, WE GROW GIANTS



**Thank You, CBAC,
for your commitment and
support of the 2013 Bond!**



**Lockwood, Andrews
& Newnam, Inc.**

A LEO A DALY COMPANY