



Facilities Planning & Construction Weekly Report

Goose Creek CISD Week of November 4– November 10, 2017 [Edition 3, Volume 70]

In This Issue:

Technology Center	Cover
Agriscience Center	Cover
Transportation Center	2
Sterling Cafeteria	2
Project Status	3
Project Status	4

Technology Center

Durotech Construction

Project Notes:

Subgrade preparation for parking/paving for pavement continues. Structural steel erection has begun. Masonry elevator shaft continues.



Bond

R. Brown - Senior Project Inspector

Project Sub-Task	Start	Finish	Completion Status
Construction Phase	4/4/2017	3/30/2018	19%

AGRISCIENCE Center

STAFF

Director:

Brenda Garcia

Project Manager:

Bruce Riggs

Sr. Project Inspector:

Ray Brown

Project Inspectors:

Carl Burg

Tom Ortman

Program Managers:

L.A.N.

Pepper-Lawson Construction

Concrete slab placement scheduled for small animal barn, is scheduled for Thursday weather permitting. Additional paving on east and driveway along south side is scheduled for placement on Thursday, weather permitting.



Bond R. Brown Project Inspector

Bond T. Musgrove-Project Inspector

Project Sub-Task	Start	Finish	Completion Status
Construction Phase	6-4-2017	3-30-2018	29%

Transportation Center

Drymalla Construction

Project Notes:

Fuel dispensing stations and bus wash is complete. Contractor working on completion of major systems, training and punch list.



Bond

R. Brown - Senior Project Inspector

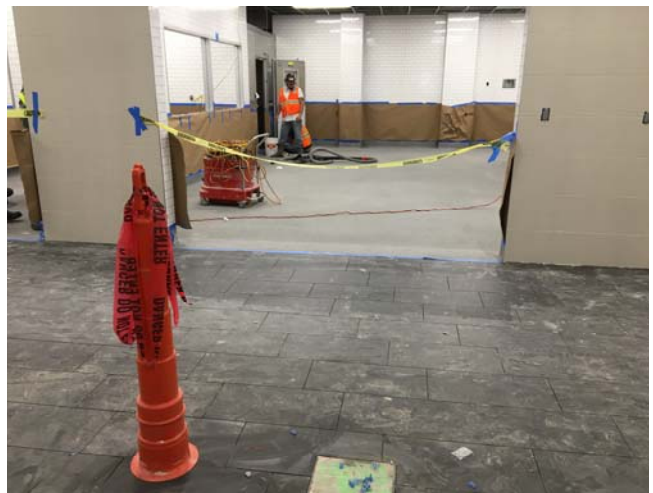
Project Sub-Task	Start	Finish	Completion Status
Construction Phase	7/15/2016	6/23/2017	99%

RSS Cafeteria Addition, Library and CTE Renovations

Bartlett Cocke Construction

Project Notes:

finishes are continuing. Completed epoxy flooring in food prep area. Storefront doors being installed this week. Boiler in start up mode.



Bond

C. Burg - Project Inspector

Project Sub-Task	Start	Finish	Completion Status
Construction Phase	1-9-2017	3-23-2018	82%

Projects' Status

Projects Under Construction

- **2016 Life Safety/Sound Pkg.** - Maintenance staff is trained on system operation. Final punchlist assembling.
- **Emergency Lighting** - Punch list items being worked by Sylvania for work at San Jacinto, BJ, REL and Hopper. Project review with engineer next week.
- **Carpet Replacement** - Installation of carpet in all offices and halls at Administration done. Recarpeting of storage closets converted into offices underway. Robert E. Lee completed. Installation at Facilities Management Complex scheduling.
- **MEP 4** - Air handler replacements of HVAC units underway at Facilities Management Complex. Light fixtures installation for exteriors and parking lots of Facilities Management Complex underway.

Projects In Planning/Development Green Center - TMS Staff relocation to Kilgore Center West Wing complete. TMS maintaining Network Operations Center at Green Center. Future use of building under evaluation.

- **YMCA Demolition** - Board of Trustees funds demolition of recently acquired facility on YMCA Drive. Purchasing Department directs Competitive bidding delivery method.
- **Stuart Career Tech HS Phase 2 Design** - Board of Trustees approves reimbursement funding to hire architect to design second phase of development. Administrative staff meeting to establish design basis prior to engaging architect.
- **Stuart Career Tech HS Marquee** - Structural column and foundation installation completed. Actual marquee cabinet due next week.
- **Administration Marquee** - Structural column and foundation installation completed.
- **District Future Needs** - LAN Program Management consultant scheduling meeting with citizens' committee on identified needs and deferred maintenance items. Facility condition assessment under discussion as district demographic study progresses.
- **RSS Career Technology Wing Water Damage** - Maintenance working issues.
- **RSS and REL Water Damaged Courts** - basketball court floors repairs underway at REL Girls and Winnie Brown gyms.

Projects' Status Continued

Completed Projects

Bond	Crockett Plumbing	Stallworth Handrails
	Crockett Parking Lot/Drive	REL Bleachers
	Lamar Playground	Alamo E.S.
	De Zavala Playground	Bañuelos E.S.
	Hopper Playground	Clark E.S.
	Lamar Carpet	Elevators
	Lamar Roof	Playgrounds (Crockett & A. Smith)
	Hopper Chiller	Peter E. Hyland Portables Windows
	Junior School STEM Labs	San Jac. & Hopper Playground Fall Zones
	2015 Life Safety	MEP 1
	MEP 2	RSS Natatorium Fan Replacement
	MEP 3	REL Windows
	FCA	SCC/Kilgore
	Vestibules/Fencing	GCM Wing addition
Non-Bond	REL Parking Lot/Drive	Carver Awning
	Travis Drive	Travis Awning
	REL Canopy	Bowie Awning
	HJS Gym Roof and Court Repairs	PEH Drive
	8 Electronic Marquees	
	IMPACT Early College	