

# Facilities Weekly Report

Volume II, Issue 55

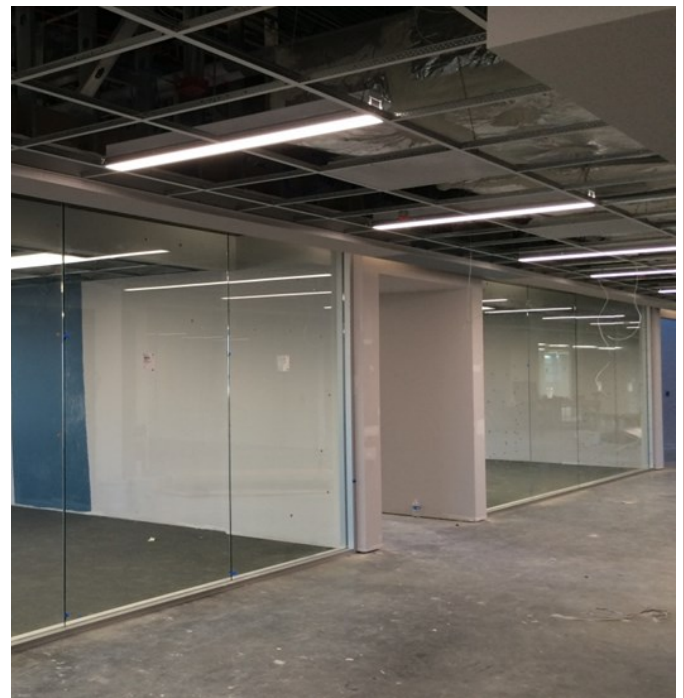
Week of July 20-24, 2015

## Impact Early College

### Marshall Construction:



The storefront and glazing is 95% complete.



The installation of glass walls between classrooms and corridors have been completed in classroom building.

### In this issue:

Impact Early College **Cover**

Impact Early College **2**  
Continued

STEM Labs **3**

Lamar Roof **4**

Bañuelos Signal Light

District Wide **5**  
Elevator  
Renovations

Alamo, Bañuelos, **6**  
and Clark Marquees

MEP Bid Pkg #1 **7**  
Lee High School

Pending Projects **8**

### Impact Early College Continued



Kitchen equipment has been installed in the kitchen/serving area.



The installation of ceramic tile in the commons area is 95% complete.

**Non Bond**  
T. Ortman— Project Inspector

## STEM Labs

### Basic I.D.I.Q., Inc.:



Furniture and computers are installed at Cedar Bayou Junior STEM Lab.



Furniture and computers are installed at Highlands Junior STEM Lab.



Demolition, renovations, new ceiling and painting is complete at Horace Mann Junior STEM Lab. The new flooring is in process at this time.

**Bond**  
C. Burg- Project Inspector

## Lamar Roof

### Rios Construction and Roofing:

The roofing is progressing on the lower south wing and north wing levels.

### Bond

T. Ortman—Project Inspector



## Bañuelos Signal Light

### Marshall Construction:

The left turn lane has been poured, and signal poles and arms have been installed. The next phase includes pulling signal wiring, installation of signal lights and control wiring. This contractor is waiting on CenterPoint Energy to provide service to power up the installation.

### Bond

Ray B.—Senior Project Inspector



## District Wide Elevator Renovations

### KONE Inc.:

Elevator work at Lee High School continues. Work is scheduled to move to Ashbel Smith and Lamar Elementary Schools next week.

### Bond

Ray B.--Senior Project Inspector



## Alamo, Bañuelos, and Clark Marquees

### Spectrum Scoreboards:

The new marquees have been installed. We are waiting on electrical connection and wireless communications installation to be completed.

### Bond

Ray B.—Senior Project Inspector

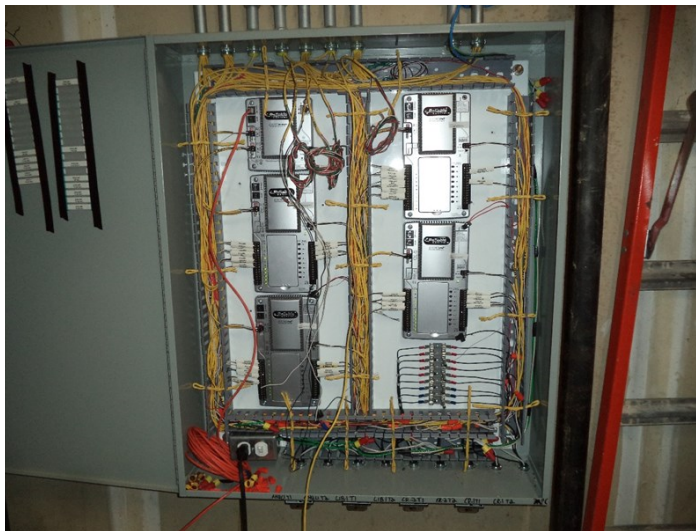


## MEP Bid Package #1 - Lee High School

TDR Contractors Inc.:



The contractor has received all of the ceiling inspections for the main building and both wings and they continue to drop ceiling tiles. Other non-contiguous building will have inspections scheduled throughout this week.



The new building automated control systems are being installed and programming is underway.



The contractor is currently awaiting on start-up by the manufacturer's start-up crew. As soon as this has been completed, conditioned air will begin throughout the campus.

**Bond**  
Ray B.—Senior Project Inspector

Facilities Planning & Construction  
3401 N. Main  
Baytown, Texas 77521

Phone: 281-425-3600

Fax: 281-420-5140

E-mail: dkfluker@gccisd.net

**Staff**

...

**Executive Director:**

David Fluker

**Asst. Director:**

Brenda Garcia

**Project Manager:**

Bruce Riggs

**Senior Project Inspector:**

Ray Brown

**Project Inspectors:**

Carl Burg

Tom Ortman

**Pending Projects:**

- Data Center<sup>B</sup>  
-The design development phase has now begun.
- GCM Wing Addition<sup>B</sup>  
-The bid schedule is being set.
- Natatorium<sup>B</sup>
- Stallworth Handrails  
-The contractor is scheduling materials and work.
- Stuart/Kilgore Repurpose<sup>B</sup>  
-The design development phase has now begun.
- Transportation Center<sup>B</sup>
- Travis Parking<sup>NB</sup> (Not Funded)

B- Bond

NB- Non Bond

