

GOOSE CREEK CISD'S HIGH SCHOOL

# OPTIONS

FOR THE CLASS OF 2028

APPLICATIONS DUE NOVEMBER 27, 2023 AT 11:59 PM





**CAMPUS &  
PROGRAM  
OPTIONS**

**3-5**

**HIGH SCHOOL GRADUATION ENDORSEMENTS**

**FOUNDATION GRADUATION REQUIREMENTS:**

- ENGLISH: 4 credits
- MATH: 3 credits
- SCIENCE: 3 credits

**ARTS & HUMANITIES**  
A student may earn this endorsement by completing the following:

- The FOUNDATION GRADUATION REQUIREMENTS AND
- The additional credit hours of an additional credit in MUSIC, CTE, or other approved courses

**BUSINESS & INDUSTRY**  
A student may earn this endorsement by completing the following:

- The FOUNDATION GRADUATION REQUIREMENTS AND
- The additional credit hours of an additional credit in BUSINESS, CTE, or other approved courses

**IMPORTANT HIGH SCHOOL COURSE SELECTION TERMS**

Students must select an endorsement in the ninth grade.

Students earn an endorsement by completing the curriculum requirements for the endorsement, including a fourth credit of credit in science and 2 additional elective credits.

**MULTIDISCIPLINARY**  
A student may earn this endorsement by completing the following:

- The FOUNDATION GRADUATION REQUIREMENTS AND
- The additional credit hours of an additional credit in science or CTE

**PUBLIC SERVICES**  
A student may earn this endorsement by completing the following:

- The FOUNDATION GRADUATION REQUIREMENTS AND
- The additional credit hours of an additional credit in science or CTE

**SCIENCE, TECHNOLOGY, ENGINEERING & MATH**  
A student may earn this endorsement by completing the following:

- The FOUNDATION GRADUATION REQUIREMENTS AND
- The additional credit hours of an additional credit in science or CTE

**6-7**

**HIGH SCHOOL GRADUATION ENDORSEMENTS**

**STEP 1**

**ACADEMY OF  
AGRICULTURAL  
SCIENCES**

**8**

**ADVANCED  
AUTOMOTIVE  
ACADEMY**

**9**

**COSMETOLOGY  
PROGRAM**

**10**

**ACADEMY OF  
CULINARY  
ARTS**

**11**

**DIGITAL  
COMMUNICATIONS  
ACADEMY**

**12**

**CAREER ACADEMY  
FOR FUTURE  
EDUCATORS**

**13**

**GLOBAL  
BUSINESS  
ACADEMY**

**14**

**HEALTH  
SCIENCE  
ACADEMY**

**15**

**IMPACT  
EARLY COLLEGE  
HIGH SCHOOL**

**16**

**INFORMATION  
TECHNOLOGY  
CAREER ACADEMY**

**17**

**MANUFACTURING  
& INDUSTRIAL MAINTENANCE  
CAREER ACADEMY**

**18**

**MARITIME  
PROGRAM**

**19**

**STEP 2**

**SCIENCE, TECHNOLOGY,  
ENGINEERING AND  
MATH ACADEMY**

**20**

**MEMORIAL HS  
PROGRAM OF STUDY  
OPTIONS**

**21**

**ROBERT E. LEE HS  
PROGRAM OF STUDY  
OPTIONS**

**22**

**ROSS S. STERLING HS  
PROGRAM OF STUDY  
OPTIONS**

**23**

It is the policy of GCCISD not to discriminate on the basis of race, color, national origin, sex, disability, or age in its programs and activities, including educational and extracurricular programs and hiring and employment activities. Furthermore, GCCISD will take steps to assure that lack of English language skills will not be a barrier to admission and participation in all educational and CTE programs and employment with the District. For information about your rights, the District's non-discrimination policies, or grievance procedures related to these policies, contact the Title IX Coordinator, Matt Bolinger, Assistant Superintendent (matthew.bolinger@gccisd.net), and/or the Senior Director of Special Services, Holli Pharis (holli.pharis@gccisd.net), at 4544 I-10 East, Baytown, TX or call 281-420-4800.



You are about to make one of the most exciting transitions of your life! You must, however, make several choices to be sure your high school experience is the best it can be.

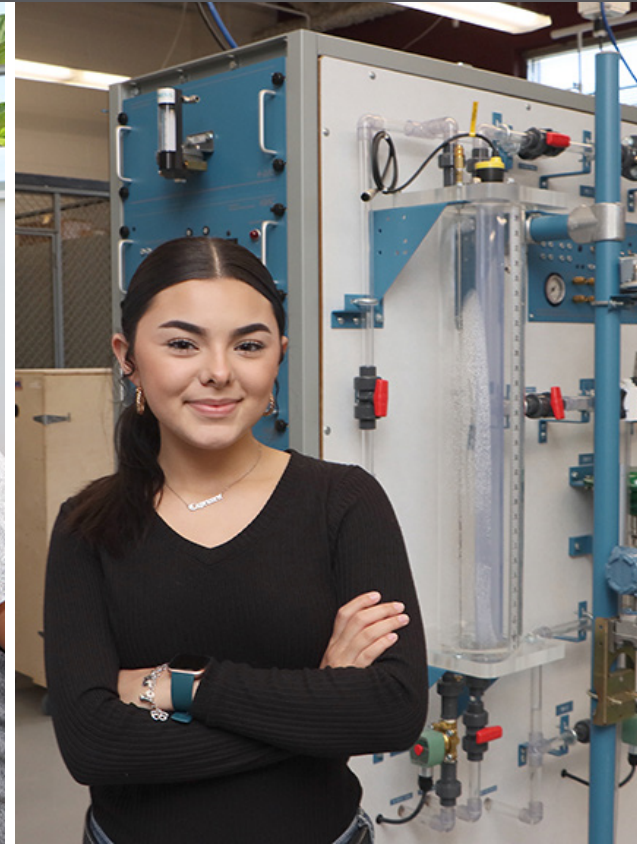
**CAMPUS OPTIONS**

Eighth grade students (Class of 2028) have many options when planning for their high school years. All 8th graders will choose a program of study from the traditional high school campus to which they are zoned.

If interested, they may also choose to apply to one of the many high school options that are available.

**8TH GRADE PLANNING TIMELINE**

<b>STEP 1: If interested, apply to a career academy, cosmetology program, maritime program or IMPACT by completing the online application that is available beginning in October.</b>	
<b>10/23/23 – 11/27/23</b>	<b>8TH GRADE HIGH SCHOOL OPTIONS APPLICATION WINDOW</b> 8th grade students interested in applying to a career academy, cosmetology program, maritime program or IMPACT need to complete the online application that can be found at <a href="http://www.gccisd.net">www.gccisd.net</a> .
<b>11/27/23</b>	<b>8TH GRADE HIGH SCHOOL OPTIONS APPLICATIONS DEADLINE</b>
<b>12/1/23</b>	<b>8TH GRADE HIGH SCHOOL OPTIONS ACCEPTANCE LETTERS DISBURSED TO STUDENTS</b> 8th grade students who are accepted to a career academy, cosmetology program, maritime program or IMPACT will receive an acceptance letter.
<b>12/5/23</b>	<b>8TH GRADE MANDATORY PARENT MEETING</b> Mandatory parent meeting for students accepted into cosmetology program, maritime program or an academy.
<b>12/6/23</b>	<b>8TH GRADE MANDATORY PARENT MEETING FOR IMPACT ACCEPTANCE</b>
<b>1/8/24 – 7/31/24</b>	<b>8TH GRADE 2ND ROUND OF HIGH SCHOOL OPTIONS APPLICATIONS WINDOW OPEN</b> 8th grade students will have the opportunity during the 2nd round of applications to apply online to a career academy, cosmetology program, maritime program or IMPACT based upon space availability in each program.
<b>STEP 2: High School Course Selection based on Program of Study.</b>	
<b>1/8/24 – 1/31/24</b>	<b>8TH GRADER PROGRAM OF STUDY SELECTION</b> All 8th grade students will select an endorsement and program of study for the campus they are zoned to.



- ▶ Academy of Agricultural Science at Stuart Career Tech HS
- ▶ Advanced Automotive Academy at Stuart Career Tech HS
- ▶ Cosmetology Program at Robert E. Lee HS
- ▶ Academy of Culinary Arts at Stuart Career Tech HS
- ▶ Digital Communications Academy at Stuart Career Tech HS
- ▶ Career Academy for Future Educators at Ross S. Sterling HS
- ▶ Global Business Academy at Goose Creek Memorial HS
- ▶ Health Science Academy at Ross S. Sterling HS
- ▶ IMPACT Early College HS
- ▶ Information Technology Career Academy at Stuart Career Tech HS
- ▶ Manufacturing & Industrial Maintenance Career Academy at Stuart Career Tech HS
- ▶ Maritime Program at Robert E. Lee HS
- ▶ Science, Technology, Engineering & Math (STEM) Academy at Robert E. Lee HS

### Career Academies

The Goose Creek CISD Career Academies are small learning communities within larger campuses that focus on a career theme. Academy students take classes as a group (cohort) which provides students the opportunity to attend classes with other students with similar interests.

Academic classes integrate the career theme into assignments, with projects that span across multiple subjects. Students learn from a rigorous curriculum, which includes opportunities for Advanced Placement (AP) courses, dual credit courses, career-oriented courses, and college and career learning opportunities directly related to the career theme. Enrichment activities that help students learn more about college and career opportunities are provided each semester and culminate in a senior capstone experience that may include internships, practicums, mentoring or other career-based experiences.

All 8th grade students may apply to any of the Goose Creek CISD Academies regardless of the high school to which they are zoned. The district provides transportation to each of the academies for all students. Academy students at REL, RSS & GCM are eligible for the extra-curricular activities that are available at each of the high schools. All academy students are expected to participate in the career and technical student organization connected to their curriculum. SCTHS students can participate in extracurricular activities that are available at their zoned campus.

## Early College High Schools

Early College and Pathways to Technology (P-TECH) High Schools are innovative schools that are designed to overlap high school and college. They enable highly motivated students to complete an associate's degree or a college certification program before they graduate from high school. The majority of classes taken by students are college-level classes, some taught by college teachers and on the college campus. These campuses provide dual credit college courses at no cost to students, provide academic and social support services to help students succeed, increase college readiness, and reduce barriers to college access. Transportation is provided for students who are accepted into an early college or P-TECH high school. Students must complete the full application process to be considered for an early college high school. GCCISD offers three (3) early college high schools: IMPACT Early College HS, Stuart Career Tech HS, and Ross S. Sterling HS. The Pathways in Technology ECHS at SCTHS focuses on career pathways working with community partners to design activities to connect students to their career pathway while earning college credit.

## Traditional Zoned Campus

These high schools are the campuses that students are zoned to attend based upon their address. Each zoned campus offers a comprehensive academic and enrichment curriculum, with many athletic, fine arts, and additional programs to engage students in their high school experience. GCCISD has three traditional high schools: Goose Creek Memorial HS, Robert E. Lee HS and Ross S. Sterling HS.

## PROGRAM OPTIONS

---

### AP Program

The AP Program provides GCCISD students with the opportunity to seek college-level studies while still in high school. By taking AP classes and the corresponding exams, a student may earn college credit and/or advanced placement if the student's exam score meets the criteria set by his/her university or college. By taking an AP course and scoring successfully on the related AP exam, students can save on college expenses. For more information on GCCISD AP classes, visit the Advanced Academics web page at <https://bit.ly/3utMKrj>. AP classes are available at all traditional school campuses.

## AVID (Advancement Via Individual Determination)

AVID is an elective course taken during the school day. AVID students learn organizational and study skills while developing critical thinking and problem solving skills. They learn to ask probing questions, receive academic help from peers and college tutors, and participate in enrichment and motivational activities that make college more attainable. Students enrolled in AVID are required to enroll in at least one of their school's most rigorous classes, such as AP, Advanced Placement, or dual credit. Students must complete an application to participate in AVID. AVID is available through the career academies, the traditional and early college high schools.

## Career & Technical Education

Goose Creek CISD's CTE programs on the traditional high school campuses offer a world of rigorous and relevant programs that allow students to explore a range of options for their future—including college and career—while still participating in athletics, fine arts, and other extracurricular activities. They expand students' high school experiences by providing opportunities for work-based learning through paid and unpaid experiences including internships, job shadowing, mentorships and networking with local community leaders. CTE students can also participate in career and technical student organizations (CTSOs) and earn college credit while still in high school. CTE courses help build students' self-confidence by delivering academic and employability skills and industry credentials that lead to success in college and career. GCCISD CTE programs are open to all students although the number of seats in each program may be limited by space. For more information on GCCISD CTE programs, visit <http://www.gccisd.net/CTE>.

## Dual Credit

Dual credit is a process by which a high school student enrolls in a college course and receives simultaneous credit for the course from both the college and the high school. This is a great opportunity to save both time and money! In order to enroll in a dual credit course, a student must complete a series of steps that are involved in the registration process. The first step is to meet with his/her high school counselor and receive written approval through the counselor to take the course and written approval from the parent/guardian to register for the course. For more information regarding the GCCISD Dual Credit Program, visit the Advanced Academics web page at <https://bit.ly/3utMKrj>. Dual credit classes are available at all high school campuses.

## IMPORTANT COURSE SELECTION TERMS

This is just a short list of terms related to the high school options presented in this publication. Be sure to refer to the Educational Planning Guide for much more information about successful high school, college and career planning!

### Coherent Sequence of Courses

A coherent sequence of courses is a series of at least four courses, at least one credit per grade level, that lead to a student's learning the academic and hands-on skills required to be college and career ready upon high school graduation in a very specific program of study.

### Endorsement

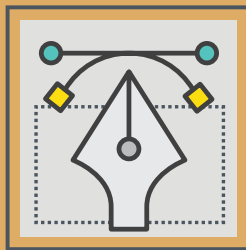
GCCISD students may earn an endorsement on their high school graduation diploma by completing a coherent sequence of courses in a specific pathway along with other curriculum requirements, including a 4th credit of math and science and 2 additional elective credits. Students in GCCISD may choose from all five Texas Endorsements: Arts & Humanities, Business & Industry, Multidisciplinary, Public Services, and Science, Technology, Engineering and Math (STEM). The STEM endorsement requires an additional credit in math and additional credit in science including Algebra II, Chemistry and Physics.

# HIGH SCHOOL GRADUATION ENDORSEMENTS



## FOUNDATION GRADUATION REQUIREMENTS:

- ▶ **ENGLISH:** 4 credits
- ▶ **MATH:** 3 credits
- ▶ **SCIENCE:** 3 credits
- ▶ **SOCIAL STUDIES:** 3 credits
- ▶ **FOREIGN LANGUAGE:** 2 credits
- ▶ **TECHNOLOGY:** 1 credit
- ▶ **HEALTH:** 1/2 credit
- ▶ **P.E.:** 1 credit
- ▶ **FINE ARTS:** 1 credit
- ▶ **ELECTIVES:** 5 credits



## ARTS & HUMANITIES

A student may earn this endorsement by completing the following:

- ▶ The **FOUNDATION GRADUATION REQUIREMENTS AND**
- ▶ One additional credit in math
- ▶ One additional credit in science, CTE Science or other approved elective

### PLUS ONE OF THE FOLLOWING OPTIONS:

- ▶ **FINE ARTS OPTION:** A coherent sequence of four (4) credits from one (1) of the following areas OR four (4) credits consisting of two (2) sequential credits from two (2) of the following areas:
  - ▶ Art
  - ▶ Dance
  - ▶ Music
  - ▶ Theatre

### LANGUAGE OTHER THAN ENGLISH

**OPTION:** Four (4) levels in the same language other than English OR two (2) levels of one language other than English & two (2) levels of a different language other than English

### SOCIAL STUDIES OPTION:

- ▶ Five (5) social studies courses



## BUSINESS & INDUSTRY

A student may earn this endorsement by completing the following:

### THE FOUNDATION GRADUATION REQUIREMENTS AND

- ▶ One additional credit in math
  - ▶ One additional credit in science or CTE Science
- AND

A coherent sequence of courses for four (4) or more credits in CTE that consists of at least two (2) courses in the same career cluster, including:

- ▶ Agriculture, Food & Natural Resources
- ▶ Architecture & Construction
- ▶ Arts, Audio/Video Technology & Communications
- ▶ Business, Marketing & Finance
- ▶ Energy
- ▶ Hospitality & Tourism
- ▶ Information Technology
- ▶ Manufacturing
- ▶ Transportation, Distribution & Logistics

## Four-Year Plan

A student's four-year plan is the list of required and elective courses that the student plans to take during high school in order to meet the state and district requirements for graduation plus the additional courses the student will take to develop the knowledge and skills necessary to meet the student's goal for postsecondary education and/or the workforce.

## Pathways

Every endorsement is broken down into multiple pathways that represent a broad career cluster or career fields that require similar academic and technical knowledge and skills. Each pathway is numbered and may include multiple Programs of Study.

## Program of Study

A program of study is a comprehensive, structured approach for delivering a coherent sequence of courses, both academic and technical, that prepare students for postsecondary education and entry level careers in a specific occupation or in closely related occupations, upon high school graduation.

- ▶ Students must select an endorsement in the ninth grade.
- ▶ Students earn an endorsement by completing the curriculum requirements for the endorsement, including a fourth credit of math & science and 2 additional elective credits.



### MULTIDISCIPLINARY

A student may earn this endorsement by completing the following:

#### THE FOUNDATION GRADUATION REQUIREMENTS AND

- ▶ One additional credit in math
- ▶ One additional credit in science or CTE Science

#### PLUS ONE OF THE FOLLOWING OPTIONS:

**4X4 OPTION:** Four (4) credits in each of the four foundation subject areas (English, math, science & social studies), including English IV and chemistry and/or physics

#### ADVANCED CTE COURSE OPTION:

Four (4) Advanced CTE courses that prepare a student to enter the workforce or postsecondary education successfully without remediation from within one endorsement area or among endorsement areas that are not in a coherent sequence

#### COLLEGE LEVEL COURSE OPTION:

Four (4) credits in College Board Advanced Placement or dual credit courses, selected from English, math, science, social studies, economics, foreign language or fine arts.



### PUBLIC SERVICES

A student may earn this endorsement by completing the following:

#### The FOUNDATION GRADUATION REQUIREMENTS AND

- ▶ One additional credit in math
- ▶ One additional credit in science or CTE Science

#### PLUS ONE OF THE FOLLOWING OPTIONS:

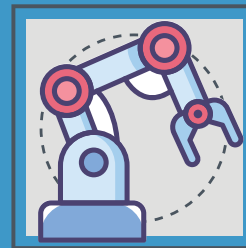
##### CTE OPTION:

A coherent sequence of courses for four (4) or more credits in CTE that consists of at least two (2) courses in the same career cluster, including:

- ▶ At least one Advanced CTE course, and
- ▶ A final course in the sequence from one of the following career clusters:
  - ▷ Education & Training
  - ▷ Health Science
  - ▷ Human Services
  - ▷ Law and Public Service

##### JROTC OPTION:

Four (4) courses in JROTC



### SCIENCE, TECHNOLOGY, ENGINEERING & MATH

A student may earn this endorsement by completing the following:

#### The FOUNDATION GRADUATION REQUIREMENTS AND

- ▶ One additional credit in math
- ▶ One additional credit in science or CTE Science

#### PLUS ONE OF THE FOLLOWING OPTIONS

##### CTE OPTION

A coherent sequence of courses or four (4) or more credits in CTE that consists of at least two (2) courses in the same career cluster, including:

- ▶ At least one Advanced CTE course, and
- ▶ A final course in the sequence from the STEM Career Cluster

##### MATHEMATICS OPTION

Two (2) additional courses for which Algebra II is a prerequisite

##### SCIENCE OPTION

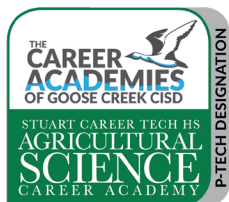
Two (2) additional science courses

##### COMBINATION OPTION

A coherent sequence of three (3) additional credits from no more than two of the options above CTE Option



## ACADEMY OF AGRICULTURAL SCIENCES AT SCTHS



Students in the Academy of Agricultural Sciences have two pathways to choose from: Veterinary Assistant or Plant Science. Both pathways provide students with a strong academic foundation with an emphasis on hands-on learning and problem solving. The Veterinary Assistant pathway prepares students to sit for the Certified Veterinary Assistant Exam, offered through the Texas Veterinary Medical Association while students in the Plant Science pathway prepare for the Principles of Floral Design certification offered through the Benz School of Floral Design as well as other certifications in the floral and horticulture industries. Students will be well prepared to enter the workforce and/or continue their post-secondary education to work towards becoming a Veterinary Technician, Veterinarian, Horticulturalist or Florist. Special opportunities include assisting in operating the Spa 4 Paws, SCTHS Greenhouses, job shadowing and conferences by guest speakers, all of which enhance the student's experience in the program and provide information about the field of study. Additionally, students can participate in the Stuart FFA Chapter, a Career and Technical Student Organization, dedicated to the advancement of agricultural studies. Students have the opportunity graduate with a Business & Industry Endorsement, a Performance Acknowledgment by earning college credits and industry-based certifications.



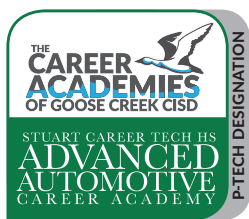
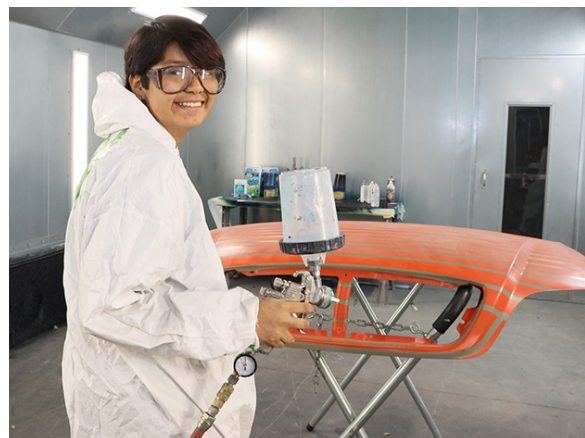
### DUAL CREDIT / COLLEGE OPTIONS:

**Core Complete (42 hours of academic dual credit through Lee College)**

GRADE 9	GRADE 10	GRADE 11	GRADE 12
<b>045-BI-PLANT SCIENCE</b>			
Principles of Agriculture, Food & Natural Resources (1cr.) AND Greenhouse Operation and Production (1 cr.)	Horticultural Science with Lab (2 cr.)	Practicum in Agriculture, Food and Natural Resources in Green House (2 cr.)	Practicum in Agriculture, Food and Natural Resources – Agriscience Center (3 cr.)
<b>004-BI-VETERINARY ASSISTANT</b>			
Principles of Agriculture, Food & Natural Resources (1cr.) AND Greenhouse Operation and Production (1 cr.)	Small Animal (.5 cr.) AND Equine Science (.5 cr.) AND Livestock Production (1 cr.)	Veterinary Medical Application / Agricultural Laboratory and Field Experience (2 cr.)	Practicum in Agriculture, Food and Natural Resources in Vet Science (3 cr.)

**COURSE COLOR CODES:** ■ 1st Year Course(s) ■ 2nd Year Course(s) ■ 3rd Year Course(s) ■ 4th Year Course(s)  
 DC denotes Dual Credit college course





## ADVANCED AUTOMOTIVE ACADEMY AT SCTHS

Automotive, Collision and Diesel Repair Technicians are one of the top 25 high-growth, high-skill, high-wage occupations in Texas. In the Advanced Automotive Academy, students learn the skills required to begin a successful career in the automotive, collision and diesel repair industries. Academic and technical classes combine automotive workplace knowledge and skills in an integrated curriculum using ASE certified facility. Partnering with Lee College and Lamar Institute of Technology, students can earn both high school and college credit for many of their academic and technical courses. Four years in the Advanced Automotive Academy will lead students to a Business & Industry Endorsement, a college associate degree or certificate, along with Performance Acknowledgments for earning Automotive Service Excellence (ASE) and ICAR certifications. Seniors may participate in internships, and scholarships are available to graduates.

### DUAL CREDIT PROGRAMS:

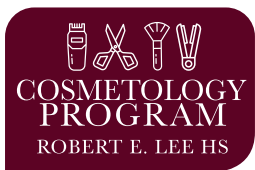
Associate of Applied Science – Automotive Technology (Lee College)

Certificate of Completion in Automotive Collision Level 1 (Lamar Institute of Technology)

Associate of Applied Science – Advanced Engine Repair (Lamar Institute of Technology)

GRADE 9	GRADE 10	GRADE 11	GRADE 12
<b>007-BI-AUTOMOTIVE TECHNICIAN</b>			
Dual Credit Automotive (2 cr.)	Dual Credit Automotive (2 cr.)	Dual Credit Automotive (2 cr.)	Dual Credit Automotive (3 cr.)
<b>007-BI-COLLISION TECHNICIAN</b>			
Dual Credit Collision (2 cr.)	Dual Credit Collision (2 cr.)	Practicum in Transportation Systems (2 cr.)	Practicum in Transportation Systems (3 cr.)
<b>007-BI-DIESEL TECHNICIAN</b>			
Dual Credit Automotive (2 cr.)	Dual Credit Diesel (2 cr.)	Dual Credit Diesel (2 cr.)	Dual Credit Diesel (3 cr.)

**COURSE COLOR CODES:** ■ 1st Year Course(s) ■ 2nd Year Course(s) ■ 3rd Year Course(s) ■ 4th Year Course(s)  
 DC denotes Dual Credit college course



## COSMETOLOGY PROGRAM AT REL

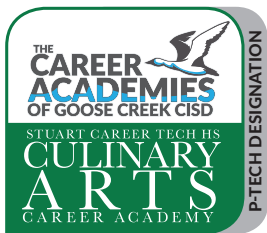
The Cosmetology Program at Lee High School is designed to meet the needs of high school students who desire to enter the personal care services industry in a minimum amount of time. Lee HS partners with Lee College to provide students the opportunity to earn both high school and college credit for their cosmetology classes. The program provides the student with the technical background and experience necessary to develop the skills and theoretical knowledge required to pass the Texas Department of Licensing and Regulation Examination to become a licensed Cosmetology Operator and to gain employment in professional salons. Students must pay a \$50 dual credit fee annually and a one-time fee of \$25 for a cosmetology student permit. Purchasing individual kits of equipment is optional for students.

### DUAL CREDIT PROGRAM:

**Certificate of Completion in Cosmetology Operator Level 1 (Lee College)**

GRADE 9	GRADE 10	GRADE 11	GRADE 12
<b>013-PS-COSMETOLOGY</b>			
Dual Credit Cosmetology Courses (2 cr.)	Dual Credit Cosmetology Courses (2 cr.)	Dual Credit Cosmetology Courses (2 cr.)	Dual Credit Cosmetology Courses (2 cr.)

**COURSE COLOR CODES:** ■ 1st Year Course(s) ■ 2nd Year Course(s) ■ 3rd Year Course(s) ■ 4th Year Course(s)  
 DC denotes Dual Credit college course



## ACADEMY OF CULINARY ARTS AT SCTHS

Students in the Academy of Culinary Arts earn college credit while they learn to feed the world while developing their passion for creating beautiful, healthy meals. Students study culinary techniques, nutrition, food chemistry, food processing and restaurant management in order to enter the 6th ranked industry on Texas Workforce Commission's list of Gulf Coast Occupations with Most Jobs Added Due to High Growth. With a team of teachers at each grade level, students' academic and technical classes integrate related culinary activities into their coursework and class projects span across academy courses. Students gain experience in the industry working in the on-site restaurant called the Titan Table, along with catering community events and serving in internships in local business and industry.

By the time these Culinary students graduate from high school with a Business & Industry Endorsement, they will have also earned Performance Acknowledgments for having completed their associate degree or certificate through Lee College dual credit classes and having earned industry certifications.

### DUAL CREDIT PROGRAM:

Associate of Applied Science – Culinary Arts (Lee College)



GRADE 9	GRADE 10	GRADE 11	GRADE 12
<b>014-BI-CULINARY ARTS</b>			
DC Culinary Courses (2 cr.)	DC Culinary Courses (2 cr.)	DC Culinary Courses (2 cr.)	DC Culinary Courses (3 cr.)

**COURSE COLOR CODES:** ■ 1st Year Course(s) ■ 2nd Year Course(s) ■ 3rd Year Course(s) ■ 4th Year Course(s)  
 DC denotes Dual Credit college course

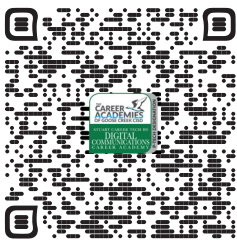


## DIGITAL COMMUNICATIONS ACADEMY AT SCTHS

Students in the Digital Communications Academy will learn about different audio, video and digital media formats that will prepare them for a career in Digital Communications. The courses in the pathway prepare students for occupations and educational opportunities associated with the production of audio and visual media formats, such as TV broadcasts, advertising, video production, or motion pictures. This Academy may also include exploration into operating machines and equipment to record sound and images, such as microphones, sound speakers, video screens, projectors, video monitors, sound and mixing boards, and related electronic equipment. By the time these students graduate from high school with a Business & Industry Endorsement, they will have also earned Performance Acknowledgments for having completed their certificate through Houston Community College dual credit classes and having earned industry certifications.

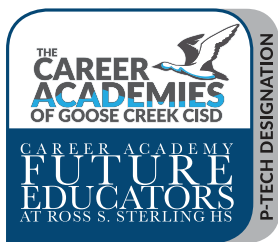
### DUAL CREDIT PROGRAM:

Certificate of Completion in Filmmaking – Film/video Production Level 1 (Houston Community College)



GRADE 9	GRADE 10	GRADE 11	GRADE 12
<b>017-BI-AUDIO, VIDEO TECH &amp; FILM</b>			
Digital Media (1 cr.) & Commercial Photography (1 cr.)	DC Audio Video Production Courses (2 cr.)	DC Audio Video Production Courses (2 cr.)	DC Audio Video Production Courses (2 cr.)

**COURSE COLOR CODES:** ■ 1st Year Course(s) ■ 2nd Year Course(s) ■ 3rd Year Course(s) ■ 4th Year Course(s)  
 DC denotes Dual Credit college course



## CAREER ACADEMY FOR FUTURE EDUCATORS AT RSS

The Career Academy for Future Educators (CAFÉ) at Sterling prepares students for a career in Education. Students engage in exciting education curriculum, job shadowing, internships and college preparation activities. With a team of teachers at each grade level, students' academic and technical classes integrate related education activities into their coursework and projects that span across academy classes. Business partners such as GCCISD Elementary, Junior, and High School campuses, Fueling Brains and local daycare centers provide students with internship opportunities to explore the vast field of teaching. Students participate in Texas Association for Future Educators (TAFE) and Educators Rising (state and national organizations) where they have the opportunity to compete against other students in education related events. Academy students earn a Public Service Endorsement with Performance Acknowledgments by earning Microsoft Office Specialist, CPR and Education Aide (after graduation). They are also eligible for the BAER2 scholarship upon graduation. Students will have the opportunity to obtain an Associate of Arts in teaching.

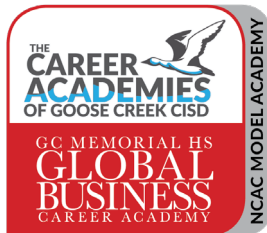
### DUAL CREDIT PROGRAM:

Associate of Arts - Teaching (Lee College)



GRADE 9	GRADE 10	GRADE 11	GRADE 12
<b>050-PS-TEACHING AND TRAINING</b>			
Principles of Education & Training (1 cr.)	Child Development (1 cr.)	Instructional Practices (2 cr) / DC	Practicum in Education and Training (2 cr.) / DC

**COURSE COLOR CODES:** ■ 1st Year Course(s) ■ 2nd Year Course(s) ■ 3rd Year Course(s) ■ 4th Year Course(s)  
 DC denotes Dual Credit college course



## GLOBAL BUSINESS ACADEMY AT GCM

The Global Business Career Academy at Goose Creek Memorial (GCM) offers students engaging business, lodging and resort management, and agribusiness curriculum, along with opportunities for job shadowing, internships, career certifications, and preparation for college and the business world. Students within the academy can select from four distinct pathways: Business Management, Business Dual Credit Associate's Plan, Lodging and Resort Management Dual Credit Associate's Plan, or Agribusiness, all featuring rigorous and coherent sequences of business courses with additional offerings in Business, Finance, Marketing, and Accounting. The Agribusiness Pathway focuses on the agricultural industry, covering agribusiness management, marketing, leadership, research, and communication. The Lodging and Resort Management Pathway focuses on the hospitality industry, including hotel management, operations, front office and guest room management, human resources, and leadership. Supported by dedicated teachers at every grade level, students seamlessly

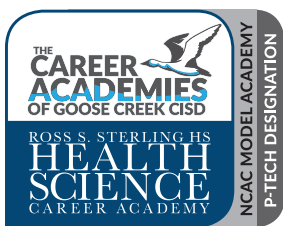
integrate related business activities into their academic and technical coursework across all academy classes. In their senior year, students have the opportunity to secure internships at institutions such as Beacon Federal Credit Union, Houston Methodist Hospital, Chick-fil-A, and other businesses aligned with their interests and chosen pathway, ultimately earning a Business & Industry Endorsement with Performance Acknowledgments through industry-based certifications.

### DUAL CREDIT / COLLEGE OPTIONS:

- Associate of Arts – Business Field of Study (Lee College)
- Associate of Applied Science – Hospitality Management (Houston Community College)
- Core Complete (42 hours of academic dual credit through Lee College)

GRADE 9	GRADE 10	GRADE 11	GRADE 12
<b>011-BI-BUSINESS MANAGEMENT</b>			
HSB Principles of Business, Marketing and Finance (1 cr.)	Business Information Management 1 (1 cr.) & HSB Money Matters (1 cr.)	HSB Banking & Financial Services / Sports & Entertainment Marketing (1 cr.) or Business Law (1 cr.)	HSB Business Management (1 cr.) or Practicum in Business Management (2 cr.)
<b>011-BI-ASSOCIATES OF ART - BUSINESS FIELD OF STUDY</b>			
HSB Principles of Business (.5 cr.) / Business Laws (.5 cr.)	Business Information Management 1 (.5 cr.) / BCIS 1305 DC (.5 cr.)	BUSI 1301 Principles of Business DC (.5 cr.) / BUSI 2301 Business Law DC (.5 cr.)	Business Management (1 cr.) and ACCT 2401 (.5 cr.) / ACCT 2402 (.5 cr.) / Practicum in Business Management (2 cr.)
<b>003-BI-AGRIBUSINESS</b>			
Principles of Agriculture, Food and Natural Resources (1 cr.)	Professional Standards in Agribusiness (.5 cr.) and DC Speech (.5 cr.)	Agribusiness Management and Marketing (1 cr.)	Agricultural Leadership, Research, and Communications (1 cr.)
<b>038-BI-LODGING AND RESORT MANAGEMENT</b>			
Principles of Hospitality (1 cr.) / DC	Hotel Management (1 cr.) / DC	Hospitality Services (2 cr.) / DC	Practicum in Hospitality Services (2 cr.) / DC

**COURSE COLOR CODES:** ■ 1st Year Course(s) ■ 2nd Year Course(s) ■ 3rd Year Course(s) ■ 4th Year Course(s)  
 DC denotes Dual Credit college course



## HEALTH SCIENCE ACADEMY AT RSS

For careers in biomedical and health sciences, the Sterling Health Science Career Academy places students on a path of excellence. Academy students complete the Project Lead the Way-Biomedical Science Pathway. They also have the opportunity to take additional courses from the Healthcare Diagnostics & Therapeutics pathway and EMT Level 1 Certificate pathway. Students can earn an Associates degree from Lee College. The associates degree prepares students to go straight into local nursing schools or transfer to a 4-year university for a hard science degree. In the Biomedical Science pathway, students explore and find solutions to some of the most pressing medical challenges. Students step into roles of biomedical science professionals and investigate topics including human medicine, physiology, genetics, microbiology and public health. Courses from the Healthcare Diagnostics & Therapeutics pathway allow students to explore healthcare careers, learn the language of medicine, learn common healthcare skills, and have the opportunity to observe in various healthcare settings around Baytown. This pathway ends with a practicum course, where students can earn a CNA, CCMA, Pharmacy Technician, EKG, or Phlebotomy certification. In the EMT pathway, students take dual credit courses to earn a level 1 certificate in EMT at Lamar Institute of Technology. In the EMT course, students participate in emergency room and ambulance clinicals. Academy students also have an opportunity to earn other certifications such as Microsoft Office, Stop-the-Bleed, Teen CERT and CPR.

### DUAL CREDIT / COLLEGE OPTIONS:

Associate of Science – Health Care Focus (Lee College)

Core Complete (42 hours of academic dual credit through Lee College)

GRADE 9	GRADE 10	GRADE 11	GRADE 12
<b>009-STEM-BIOMEDICAL SCIENCE</b>			
Principles of Biomedical Science (1 cr.)	Human Body Systems (1 cr)	Medical Interventions (1 cr.)	Biomedical Innovations (1 cr.)

**COURSE COLOR CODES:** ■ 1st Year Course(s) ■ 2nd Year Course(s) ■ 3rd Year Course(s) ■ 4th Year Course(s)  
 DC denotes Dual Credit college course



IMPACT Early College High School uniquely serves students who are eager to complete college work while also attending high school. Through our partnership with neighboring Lee College, IMPACT enables highly-motivated students to complete four years of high school while also potentially earning an associate degree or core-complete designation. After graduation from IMPACT, students are expected to pursue their bachelor's degree or higher postsecondary degrees.

IMPACT ECHS is the only GCCISD campus to offer an immersive high school and college experience.

**IMPACT has been recognized by national and local organizations:**

- ▶ Award Bronze and Silver Medals from *US News and World Report's* Best High Schools.
- ▶ Recognized by *Newsweek* as a top school preparing economically-challenged children for college.
- ▶ Ranked as one of the Best Schools through Niche, including recognition as a Niche Standout High School in America.
- ▶ Received an "A" from *Houston Magazine's* list of Top Houston Public Schools.

**IMPACT provides personalized assistance with:**

- ▶ College placement exam preparation (TSIA/PSAT/SAT).
- ▶ Targeted college course support through Friday in-school tutorials.
- ▶ Personalized navigation through college systems.

**Why choose IMPACT?**

- ▶ Smaller class sizes and dedicated staff to guide students through the blended high school and college experience, and we offer students a seamless transition between high school and college.
- ▶ Access to college classes as early as Freshman year, if students are college-ready.
- ▶ Access to Lee College support services, including college advising, career counseling, student activities, and free tutoring.



**Are you...**

- ▶ Willing and committed to work as an "honors" level student?
- ▶ Motivated to earn tuition-free college credit that also satisfies high school requirements?
- ▶ Mature enough to handle the college setting?
- ▶ Committed to attend a university to complete a bachelor's degree after high school?

**DUAL CREDIT PROGRAMS:**

**ASSOCIATE OF ARTS**

- ▶ Behavioral Science
- ▶ Communications
- ▶ Criminal Justice
- ▶ Social Science
- ▶ Teaching

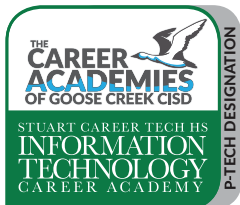
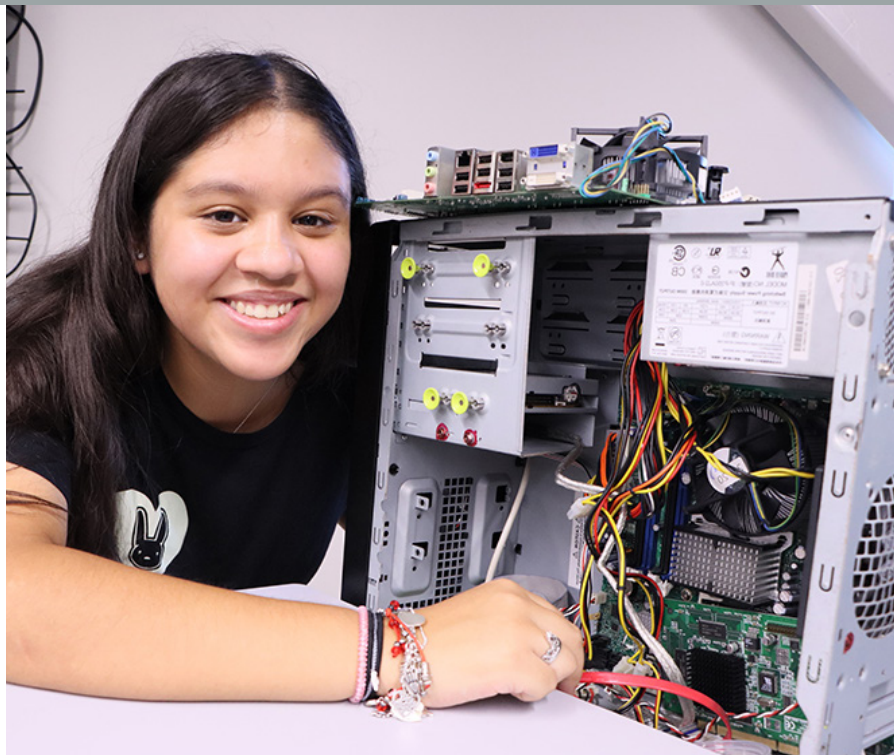
**ASSOCIATE OF SCIENCE**

- ▶ Biology
- ▶ Chemistry
- ▶ Environmental Science
- ▶ Geology
- ▶ Math
- ▶ Physics / Pre-Engineering

**How can I get more information?**

Students and parents may call IMPACT, 281-420-4802, or visit our campus website: <http://www.gccisd.net/IMPACT>.





## INFORMATION TECHNOLOGY CAREER ACADEMY AT SCTHS

Network and Computer Systems Administrators are projected to have above-average growth in the workforce. In the Information Technology Academy, students learn the skills required to begin a successful career in the network and computer systems/support industry. Academic and technical classes combine information technology workplace knowledge and skills using industry-standard certifications and curriculum. Partnering with Lee College, students can earn both high school credit and college

credit for many of their academic and technical courses. Four years with the Information Technology Academy will lead students to a Business & Industry endorsement, a college associate degree or certificate, and a Performance Acknowledgment if they earn CompTIA A+, Network+, or CISCO certifications. Seniors may participate in internships and scholarships are available to graduates.

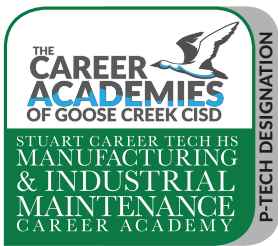
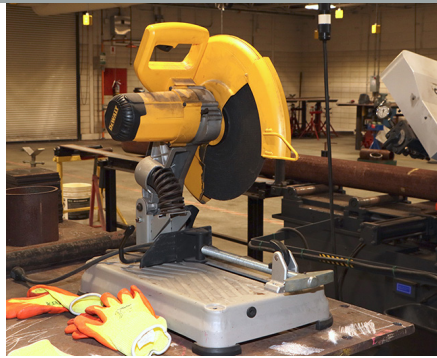
### DUAL CREDIT PROGRAM:

Associate of Applied Science – Computer Networking, Maintenance and Tech (Lee College)



GRADE 9	GRADE 10	GRADE 11	GRADE 12
<b>042-BI-IT NETWORKING SYSTEMS</b>			
DC IT Courses (2 cr.)	DC IT Courses (2 cr.)	DC IT Courses (2 cr.)	DC IT Courses (2 cr.)

**COURSE COLOR CODES:** ■ 1st Year Course(s) ■ 2nd Year Course(s) ■ 3rd Year Course(s) ■ 4th Year Course(s)  
 DC denotes Dual Credit college course



## MANUFACTURING & INDUSTRIAL MAINTENANCE CAREER ACADEMY AT SCTHS

Students in the Manufacturing and Industrial Maintenance Academy learn about the many exciting careers in the petrochemical industries from entry-level craft occupations to careers requiring two- and four-year college degrees. With a team of teachers at each grade level, students' academic and technical classes integrate related manufacturing activities into their coursework with projects that span across academy classes to introduce how industry and technology work together to create the products we use every day. Careers in manufacturing and industrial maintenance make up 50% of the high-skill, high-growth occupations targeted by the Gulf Coast Workforce Board, and they offer exciting opportunities to academy students in designing and improving products, operating high-tech equipment, and analyzing problems to develop creative solutions. In addition to working on their associate degree or certificate in welding or pipefitting students can earn a Business and Industry Endorsement with Performance Acknowledgments by earning NCCER, AWS and other credentials and certifications.

### DUAL CREDIT PROGRAMS:

Associate of Applied Science – Pipefitting (Lee College)

Associate of Applied Science – Welding (Lee College)

GRADE 9	GRADE 10	GRADE 11	GRADE 12
<b>046-BI-PIPEFITTING</b>			
DC Pipefitting Courses (2 cr.)	DC Pipefitting Courses (2 cr.)	DC Pipefitting Courses (2 cr.)	DC Pipefitting Courses (2 cr.)
<b>060-BI-WELDING</b>			
DC Welding Courses (2 cr.)	DC Welding Courses (2 cr.)	DC Welding Courses(2 cr.)	DC Welding Courses(2 cr.)

**COURSE COLOR CODES:** ■ 1st Year Course(s) ■ 2nd Year Course(s) ■ 3rd Year Course(s) ■ 4th Year Course(s)

DC denotes Dual Credit college course



## MARITIME PROGRAM AT REL

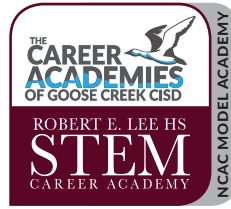
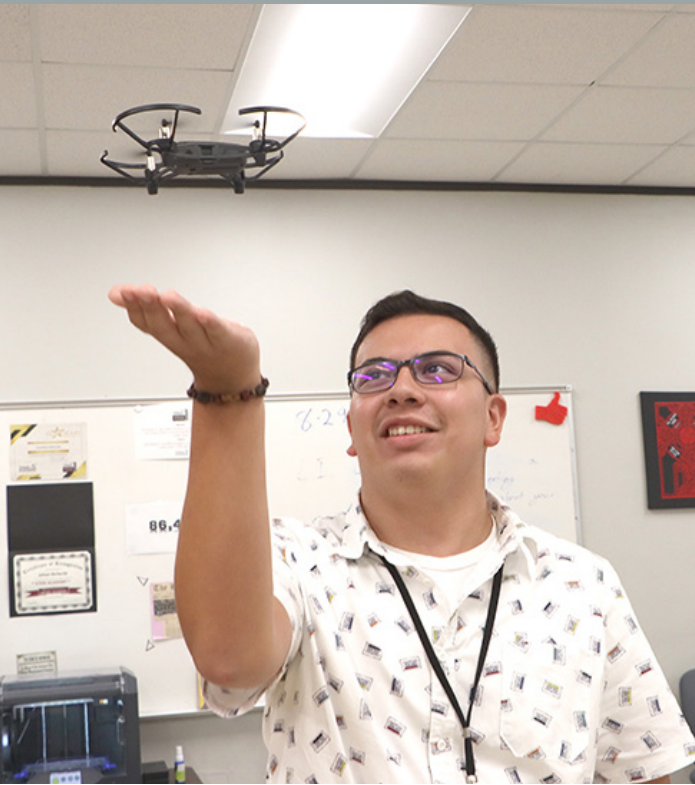
Students in the Maritime Program at Robert E. Lee HS will have the opportunity to immerse themselves in courses specific to the maritime industry. The Maritime Program introduces students to the occupations and education opportunities related to operating water vessels, maintenance procedures, maritime navigational aids, maritime traffic controls, and communications equipment to ensure conformance with federal safety regulations. Students will learn to use state-of-the-art simulation equipment, gain professional certifications, and develop skills to obtain a high paying career in the maritime industry. Students will engage in project-based learning, working with teachers, community partners and industry experts in hands-on experiences. Baytown's close location to the Port of Houston will allow opportunities for students to experience field trips and internships within the maritime industry.

### DUAL CREDIT / COLLEGE OPTION:

**Core Complete (42 hours of academic dual credit through Lee College)**

GRADE 9	GRADE 10	GRADE 11	GRADE 12
<b>058-BI-MARITIME</b>			
Principles of Maritime Science (1 cr.)	Maritime Science I (1 cr.)	Maritime Science II (1 cr.)	Practicum in Transportation, Distribution and Logistics (2 cr.)

**COURSE COLOR CODES:** ■ 1st Year Course(s) ■ 2nd Year Course(s) ■ 3rd Year Course(s) ■ 4th Year Course(s)



## SCIENCE, TECHNOLOGY, ENGINEERING & MATH ACADEMY AT REL

Lee High School hosts the Science, Technology, Engineering and Mathematics (STEM) Career Academy for Goose Creek CISD. The career academy is ideal for students desiring a career in STEM industries. Much like in college, students take at least one engineering class per year that empowers them to step into the role of an engineer, adopt a problem-solving mindset, and make the leap from dreamers to doers. The PLTW courses engage students in compelling, real-world challenges that help them become better collaborators and thinkers. Students take from this program in-demand knowledge

and skills they will use in high school and for the rest of their lives. Students even have an opportunity to design new products that can change the world. Business partners such as ExxonMobil, Samson and the City of Baytown provide opportunities to learn about the engineering world, and Lee College offers dual credit classes for the students to graduate with college credits. The STEM Academy also offers students the opportunity to acquire industry based certifications. Students enjoy a well-rounded education with site-based industry field trips, robotics competitions, guest speakers, internships, job shadowing and college visits.



### DUAL CREDIT / COLLEGE OPTIONS:

Associate of Applied Science – Instrumentation Technology (Lee College)

Core Complete (42 hours of academic dual credit through Lee College)

GRADE 9	GRADE 10	GRADE 11	GRADE 12
<b>022-STEM-ENGINEERING</b>			
Introduction to Engineering Design AC	Digital Electronics or Environmental Sustainability AC	Engineering Science AC	Engineering Design & Development AC
<b>049-STEM-INSTRUMENTATION</b>			
Principles of Applied Engineering	DC Instrumentation	DC Instrumentation	DC Instrumentation
<b>02-BI-ROBOTICS</b>			
Principles of Applied Engineering	Robotics I	Robotics II	PLTW Engineering Design & Development

COURSE COLOR CODES: ■ 1st Year Course(s) ■ 2nd Year Course(s) ■ 3rd Year Course(s) ■ 4th Year Course(s)

DC denotes Dual Credit college course



# Program of Study Options – Class of 2028

COURSE COLOR CODES: ■ 1st Year Course(s) ■ 2nd Year Course(s) ■ 3rd Year Course(s) ■ 4th Year Course(s)

## ARTS & HUMANITIES ENDORSEMENT OPTIONS

**1D-AH-DANCE:** Dance I/Drill Team I (1 cr.) | Dance II OR Drill Team II (1 cr.) | Dance III / Drill Team III (1 cr.) | Dance IV / Drill Team IV (1 cr.)

**3D-AH-MUSIC:** Band I, Choir I OR Orchestra I (1 cr.) | Band II, Choir II, OR Orchestra II (1 cr.) | Band III, Choir III, Orchestra III OR Instrumental Ensemble (1 cr.) | Band IV, Choir IV, Orchestra IV OR AP Music Theory (1 cr.)

**14D-AH-SPANISH:** Spanish I OR Spanish for Native Speakers I (1 cr.) | Spanish II OR Spanish for Native Speakers II (1 cr.) | Honors Spanish III OR Spanish for Native Speakers III (1 cr.) | AP Spanish Language (1 cr.) OR AP Spanish Literature (1 cr.)

**14-D-AH-LANGUAGE OTHER THAN ENGLISH:** Completion of 2 years of 2 languages: American Sign Language, French, Spanish, or Spanish for Native Speakers

**17D-AH-SOCIAL STUDIES:** World Geography (1 cr.) | World History (1 cr.) | U.S. History Since 1877 (1 cr.) | Government & Economics (1 cr.) + 1 additional SS course

**6D-AH-THEATRE ARTS:** Theatre Arts I, Technical Theatre I, OR Theatre Production I (1 cr.) | Theatre Arts II, Technical Theatre II, OR Theatre Production II (1 cr.) | Theatre Arts III, Tech Theatre III, OR Theatre Prod III (1 cr.) | Theatre Arts IV, Tech Theatre IV, OR Theatre Prod IV (1 cr.)

**9D-AH-VISUAL ARTS:** Art I (1 cr.) | Art II 2-D OR 3-D (1 cr.) | Art III 2-D, 3-D OR AP Studio Art Design OR Drawing OR AP Art History (1 cr.) | Art IV 2-D, 3-D OR AP Studio Art Design OR Drawing OR AP Art History (1 cr.)

## GLOBAL BUSINESS ACADEMY (APPLICATION REQUIRED)

**011-BI-BUSINESS MANAGEMENT:** Principles of Business, Marketing & Finance (1 cr.) | Money Matters (1 cr.) | Banking and Financial Services AND Sports Entertainment Marketing (1 cr.) | Business Management OR Practicum in Business Management (2 cr.)

### 011-BI-ASSOCIATES OF BUSINESS:

HSB Principles of Business (.5 cr.) / Business Law (.5 cr.) | Business Information Management 1 (1 cr.) / BCIS 1305 DC (.5 cr.) | BUSI 1301 Principles of Business DC (.5 cr.) / BUSI 2301 Business Law DC (.5 cr.) | Business Management (1 cr.) ACCT 2401 (.5 cr.) / ACCT 2402 (.5 cr.) OR Practicum in Business Management (2 cr.)

### 011-BI-AGRIBUSINESS:

Principles of Agriculture, Food and Natural Resources (1 cr.) | Professional Standards in Agribusiness (.5 cr.) & DC Speech (.5 cr.) | Agribusiness Management and Marketing (1 cr.) | Agricultural Leadership, Research, and Communications (1 cr.)

### 038-BI-LODGING AND RESORT MANAGEMENT:

Principles of Hospitality (1 cr.) / DC | Hotel Management (1 cr.) / DC | Hospitality Services (2 cr.) / DC | Practicum of Hospitality Services (2 cr.) / DC

Please complete the online application in to apply for this program.

## BUSINESS & INDUSTRY ENDORSEMENT OPTIONS

**004-BI-ANIMAL SCIENCE:** Principles of AFNR (1 cr.) | Equine Science (½ cr.) AND Small Animal Mgmt. (½ cr.) | Livestock Production (1 cr.)<sup>a</sup> | Advanced Animal Science<sup>a</sup> (1 cr.) OR Practicum in AFNR–Agriscience Center<sup>a</sup> (2 cr.)

**012-BI-CONSTRUCTION:** Principles of Construction (1 cr.) | Construction Technology I (2 cr.) | Construction Technology II<sup>a</sup> (2 cr.) | Practicum in Construction Technology (2 cr.)

**029-BI-GRAPHIC & FASHION DESIGN (YEARBOOK):** Digital Media (1 cr.) | Fashion I (1 cr.) OR Commercial Photography OR Video Game Design (1 cr.) | Fashion II (1 cr.) OR Graphic Design & Illustration 1-Yearbook I (1 cr.) | Graphic Design & Illustration 2-Yearbook II<sup>a</sup> (2 cr.)

**018-BI-TDL-LOGISTICS:** Lee College Courses

**005-BI-APPLIED AGRICULTURAL ENGINEERING:** Principles of AFNR (1 cr.) | Agricultural Mechanics & Metal Tech (1 cr.) | Agricultural Structures Design & Fabrication<sup>a</sup> (1 cr.) | Agricultural Equipment Design & Fabrication<sup>a</sup> (1 cr.) OR Practicum in AFNR–Agriscience Center<sup>a</sup> (2 cr.)

**060-BI (2)-AFNR-WELDING:** Program starts 10th / Application Based | Intro to AFNR-Welding (1 cr.) | Practicum in AFNR-Welding<sup>a</sup> (2 cr.) | Practicum in AFNR-Welding II<sup>a</sup> (2 cr.)

**034-BI-HVAC:** Principles of Construction (1 cr.) | Construction Technology 1 (2 cr.) | HVAC Courses (2 cr.) / DC | HVAC Courses (2 cr.) / DC

## MULTIDISCIPLINARY ENDORSEMENT OPTIONS

**65D-MS-ADVANCED COURSE OPTION:** 4 Advanced Academic OR Advanced CTE courses

**66D-MS-COLLEGE CREDIT OPTION:** 4 credits in Advanced Placement OR Academic Dual Credit

**68D-MS-4X4 OPTION:** 4 credits in each of the following areas: English, Math, Science (incl. Chemistry AND/OR Physics), and Social Studies

## PUBLIC SERVICES ENDORSEMENT OPTIONS

**033-PS-HEALTHCARE DIAGNOSTICS & THERAPEUTIC:** Principles of Health Science (1 cr.) | Medical Terminology (1 cr.) | Health Science Theory/Health Science Clinical<sup>a</sup> (2 cr.) | Practicum in Health Science<sup>a</sup> (2 cr.) AND/OR Anatomy & Physiology<sup>a</sup> (1 cr.) OR DC Anatomy & Physiology<sup>a</sup> (1 cr.)

**036-PS-LAW ENFORCEMENT:** Principles of Law, Public Safety, Corrections & Security (1 cr.) | Law Enforcement I (1 cr.) OR Dual Credit Law Enforcement | Law Enforcement II<sup>a</sup> (1 cr.) OR Dual Credit Law Enforcement | Forensic Science<sup>a</sup> (1 cr.) AND/OR Practicum in Law Enforcement<sup>a</sup> (2 cr.) OR Dual Credit Law Enforcement

**84D-PS-JROTC:** ROTC I–Leadership Education 1 (1 cr.) | ROTC II–Leadership Education 2 (1 cr.) | ROTC III–Leadership Education 3 (1 cr.) | ROTC IV–Leadership Education 4 (1 cr.)

## STEM ENDORSEMENT OPTIONS

(ALGEBRA II, CHEMISTRY & PHYSICS + 5TH MATH + 5TH SCIENCE REQUIRED)

**91D-STEM-MATH:** (5 credits in math)

**92D-STEM-SCIENCE:** (5 credits in Science)

**99D-STEM-COMBINATION:** (5 credits in Math/Science/Engineering)

**047-STEM-PROGRAMMING & SOFTWARE DEVELOPMENT:** Fundamentals of Computer Science (1 cr.) | Game Programming and Design (1 cr.) | Computer Science I (1 cr.) OR OnRamps Computer Science (1 cr.) | Computer Science II (1 cr.)

Courses subject to change based upon student interest & campus availability. For Lee College Courses, TSI requirements must be met and additional fees will apply. **OTHER CTE COURSES AVAILABLE FOR 9TH GRADERS:** Introduction to Culinary Arts, Floral Design, Lifetime Nutrition and Wellness, Introduction to Engineering Design, Principles of Education & Training. **OTHER CTE COURSES AVAILABLE FOR 10TH–12TH GRADERS:** Advanced Floral Design, Food Science, Engineering Science, Environmental Sustainability, Engineering Design & Problem-Solving, Engineering Design & Development, Child Development, Instructional Practices, Practicum In Education & Training, Wildlife & Ecology Management.

<sup>a</sup> Advanced CTE Course



# Program of Study Options – Class of 2028

COURSE COLOR CODES: ■ 1st Year Course(s) ■ 2nd Year Course(s) ■ 3rd Year Course(s) ■ 4th Year Course(s)

## ARTS & HUMANITIES ENDORSEMENT OPTIONS

**1D-AH-DANCE:** Dance I/Drill Team I (1 cr.) | Dance II OR Drill Team II (1 cr.) | Dance III / Drill Team III (1 cr.) | Dance IV / Drill Team IV (1 cr.)

**3D-AH-MUSIC:** Band I, Choir I OR Orchestra I (1 cr.) | Band II, Choir II, OR Orchestra II (1 cr.) | Band III, Choir III, Orchestra III OR Instrumental Ensemble (1 cr.) | Band IV, Choir IV, Orchestra IV OR AP Music Theory (1 cr.)

**14D-AH-SPANISH:** Spanish I OR Spanish for Native Speakers I (1 cr.) | Spanish II OR Spanish for Native Speakers II (1 cr.) | Honors Spanish III OR Spanish for Native Speakers III (1 cr.) | AP Spanish Language (1 cr.) OR AP Spanish Literature (1 cr.)

**14-D-AH-LANGUAGE OTHER THAN ENGLISH:** Completion of 2 years of 2 languages: American Sign Language, French, Spanish, or Spanish for Native Speakers

**17D-AH-SOCIAL STUDIES:** World Geography (1 cr.) | World History (1 cr.) | U.S. History Since 1877 (1 cr.) | Government & Economics (1 cr.) + 1 additional SS course

**6D-AH-THEATRE ARTS:** Theatre Arts I, Technical Theatre I, OR Theatre Production I (1 cr.) | Theatre Arts II, Technical Theatre II, OR Theatre Production II (1 cr.) | Theatre Arts III, Tech Theatre III, OR Theatre Prod III (1 cr.) | Theatre Arts IV, Tech Theatre IV, OR Theatre Prod IV (1 cr.)

**9D-AH-VISUAL ARTS:** Art I (1 cr.) | Art II 2-D OR 3-D (1 cr.) | Art III 2-D, 3-D OR AP Studio Art Design OR Drawing OR AP Art History (1 cr.) | Art IV 2-D, 3-D OR AP Studio Art Design OR Drawing OR AP Art History (1 cr.)

## BUSINESS & INDUSTRY ENDORSEMENT OPTIONS

**004-BI-ANIMAL SCIENCE:** Principles of AFNR (1 cr.) | Equine Science (½ cr.) AND Small Animal Mgmt. (½ cr.) | Livestock Production<sup>a</sup> (1 cr.) | Advanced Animal Science<sup>a</sup> (1 cr.) OR Practicum in AFNR–Agriscience Center<sup>a</sup> (2 cr.)

**029-BI-GRAPHIC DESIGN (YEARBOOK):** Digital Media (1 cr.) | Commercial Photography (1 cr.) OR Video Game Design (1 cr.) | Graphic Design & Illustration 1-Yearbook I (1 cr.) | Graphic Design & Illustration 2-Yearbook II<sup>a</sup> (2 cr.)

**005-BI-APPLIED AGRICULTURAL ENGINEERING:** Principles of AFNR (1 cr.) | Agricultural Mechanics & Metal Tech (1 cr.) | Agricultural Structures Design & Fabrication<sup>a</sup> (1 cr.) | Agricultural Equipment Design & Fabrication (1 cr.) OR Practicum in AFNR–Agriscience Center<sup>a</sup> (2 cr.)

**034-BI-HVAC:** Principles of Construction (1 cr.) | Construction Technology 1 (2 cr.) | HVAC Courses (2 cr.) / DC | HVAC Courses (2 cr.) / DC

## MARITIME PROGRAM (APPLICATION REQUIRED)

**058-BI-MARITIME:** Principles of Maritime Science (1 cr.) | Maritime Science I (1 cr.) | Maritime Science II (1 cr.) | Practicum in Transportation, Distribution and Logistics (2 cr.)

Please complete the online application to apply for this program.

## MULTIDISCIPLINARY ENDORSEMENT OPTIONS

**65D-MS-ADVANCED COURSE OPTION:** 4 Advanced Academic OR Advanced CTE courses

**66D-MS- COLLEGE CREDIT OPTION:** 4 credits in Advanced Placement OR Academic Dual Credit

**68D-MS-4X4 OPTION:** 4 credits in each of the following areas: English, Math, Science (incl. Chemistry AND/OR Physics), and Social Studies

## COSMETOLOGY PROGRAM (APPLICATION REQUIRED)

**7013-PS-COSMETOLOGY:** Lee College Courses | Lee College Courses | Lee College Courses | Lee College Courses<sup>a</sup>

Please complete the online application to apply for this program.

## PUBLIC SERVICES ENDORSEMENT OPTIONS

**033-PS-HEALTHCARE DIAGNOSTICS & THERAPEUTIC:**

Principles of Health Science (1 cr.) | Medical Terminology (1 cr.) | Health Science Theory/Health Science Clinical<sup>a</sup> (2 cr.) | Practicum in Health Science<sup>a</sup> (2 cr.) AND/OR Anatomy & Physiology<sup>a</sup> (1 cr.)

**84D-PS-JROTC:** ROTC I-Leadership Education 1 (1cr.) | ROTC II-Leadership Education 2 (1cr.) | ROTC III-Leadership Education 3 (1cr.) | ROTC IV-Leadership Education 4 (1cr.)

## STEM ACADEMY (APPLICATION REQUIRED)

**022-STEM-ENGINEERING:** Introduction to Engineering Design (PLTW) (1 cr.) | Digital Electronics (PLTW) (1 cr.) OR Environmental Sustainability (PLTW) (1 cr.) | Engineering Science (PLTW) (1 cr.) | Engineering Design & Development (EDPI) (1 cr.)

**002-STEM-ROBOTICS:** Principles of Applied Engineering (1 cr.) | Robotics I (1 cr.) | Robotics II (1 cr.) | PLTW Engineering Design & Development (1 cr.)

**049D-STEM-INSTRUMENTATION:** Principles of Applied Engineering (1 cr.) | DC Instrumentation (1 cr.) | DC Instrumentation (1 cr.) | DC Instrumentation (1 cr.)

Please complete the online application to apply for this program.

## STEM ENDORSEMENT OPTIONS

(ALGEBRA II, CHEMISTRY & PHYSICS + 5TH MATH + 5TH SCIENCE REQUIRED)

**91D-STEM-MATH:** (5 credits in math)

**92D-STEM-SCIENCE:** (5 credits in Science)

**99D-STEM-COMBINATION:** (5 credits in Math/Science/Engineering)

**047-STEM-PROGRAMMING & SOFTWARE DEVELOPMENT:**

Fundamentals of Computer Science (1 cr.) | Game Programming and Design (1 cr.) | Computer Science I (1 cr.) OR OnRamps Computer Science (1 cr.) | Computer Science II (1 cr.)

Courses subject to change based upon student interest & campus availability. For Lee College Courses, TSI requirements must be met and additional fees will apply.

**OTHER CTE COURSES AVAILABLE FOR 9TH GRADERS:** Introduction to Culinary Arts, Floral Design, Lifetime Nutrition and Wellness, Principles of Business, Marketing & Finance, Principles of Education & Training; **OTHER CTE COURSES AVAILABLE FOR 10TH–12TH GRADERS:** Entrepreneurship, Food Science, Money Matters, Child Development, Instructional Practices, Practicum in Education & Training • <sup>a</sup> Advanced CTE Course



# Program of Study Options – Class of 2028

**COURSE COLOR CODES:** ■ 1st Year Course(s) ■ 2nd Year Course(s) ■ 3rd Year Course(s) ■ 4th Year Course(s)

## ARTS & HUMANITIES ENDORSEMENT OPTIONS

**1D-AH-DANCE:** Dance I/Drill Team I (1 cr.) | Dance II OR Drill Team II (1 cr.) | Dance III / Drill Team III (1 cr.) | Dance IV / Drill Team IV (1 cr.)

**3D-AH-MUSIC:** Band I, Choir I OR Orchestra I (1 cr.) | Band II, Choir II, OR Orchestra II (1 cr.) | Band III, Choir III, Orchestra III OR Instrumental Ensemble (1 Cr.) | Band IV, Choir IV, Orchestra IV OR AP Music Theory (1 cr.)

**14D-AH-SPANISH:** Spanish I OR Spanish for Native Speakers I (1 cr.) | Spanish II OR Spanish for Native Speakers II (1 cr.) | Honors Spanish III OR Spanish for Native Speakers III (1 cr.) | AP Spanish Language (1 cr.) OR AP Spanish Literature (1 cr.)

**14-D-AH-LANGUAGE OTHER THAN ENGLISH:** Completion of 2 years of 2 languages: American Sign Language, French, Spanish, or Spanish for Native Speakers

**17D-AH-SOCIAL STUDIES:** World Geography (1 cr.) | World History (1 cr.) | U.S. History Since 1877 (1 Cr.) | Government & Economics (1 cr.) + 1 additional SS course

**6D-AH-THEATRE ARTS:** Theatre Arts I, Technical Theatre I, OR Theatre Production I (1 cr.) | Theatre Arts II, Technical Theatre II, OR Theatre Production II (1 cr.) | Theatre Arts III, Tech Theatre III, OR Theatre Prod III (1 cr.) | Theatre Arts IV, Tech Theatre IV, OR Theatre Prod IV (1 cr.)

**9D-AH-VISUAL ARTS:** Art I (1 cr.) | Art II 2-D OR 3-D (1 cr.) | Art III 2-D, 3-D OR AP Studio Art Design OR Drawing OR AP Art History (1 Cr.) | Art IV 2-D, 3-D OR AP Studio Art Design OR Drawing OR AP Art History (1 cr.)

## BUSINESS & INDUSTRY ENDORSEMENT OPTIONS

**004-BI-ANIMAL SCIENCE:** Principles of AFNR (1 cr.) | Equine Science (½ cr.) AND Small Animal Mgmt. (½ cr.) | Livestock Production<sup>a</sup> (1 cr.) | Advanced Animal Science<sup>a</sup> (1 cr.) OR Practicum in AFNR–Agriscience Center<sup>a</sup> (2 cr.)

**012-BI-CONSTRUCTION:** Principles of Construction (1 cr.) | Construction Technology I (2 cr.) | Construction Technology II<sup>a</sup> (2 cr.) | Practicum in Construction Technology<sup>a</sup> (2 cr.)

**029-BI-GRAPHIC & FASHION DESIGN (YEARBOOK):** Digital Media (1 cr.) | Fashion I (1 cr.) OR Commercial Photography (1 cr.) OR Video Game Design (1 cr.) | Fashion II (1 cr.) OR Graphic Design & Illustration 1-Yearbook I (1 cr.) | Graphic Design & Illustration 2-Yearbook II<sup>a</sup> (2 cr.)

**005-BI-APPLIED AGRICULTURAL ENGINEERING:** Principles of AFNR (1 cr.) | Agricultural Mechanics & Metal Tech (1 cr.) | Agricultural Structures Design & Fabrication<sup>a</sup> (1 cr.) | Agricultural Equipment Design & Fabrication (1 cr.) OR Practicum in AFNR–Agriscience Center<sup>a</sup> (2 cr.)

Courses subject to change based upon student interest & campus availability. For Lee College Courses, TSI requirements must be met and additional fees will apply.

**OTHER CTE COURSES AVAILABLE FOR 9TH GRADERS:** Introduction to Culinary Arts, Floral Design, Lifetime Nutrition and Wellness, Introduction to Engineering Design (PLTW), Principles of Business, Marketing & Finance; **OTHER CTE COURSES AVAILABLE FOR 10TH–12TH GRADERS:** Entrepreneurship, Food Science, Career Prep I and II, Engineering Science (PLTW), Environmental Sustainability (PLTW), Engineering Design & Problem-Solving, Engineering Design & Development (PLTW), Money Matters, Business Law, Business Management, Wildlife & Ecology Management.

<sup>a</sup> Advanced CTE Course

## MULTIDISCIPLINARY ENDORSEMENT OPTIONS

**65D-MS-ADVANCED COURSE OPTION:** 4 Advanced Academic OR Advanced CTE courses

**66D-MS- COLLEGE CREDIT OPTION:** 4 credits in Advanced Placement OR Academic Dual Credit

**68D-MS-4X4 OPTION:** 4 credits in each of the following areas: English, Math, Science (incl. Chemistry AND/OR Physics), and Social Studies

## CAREER ACADEMY FOR FUTURE EDUCATORS (APPLICATION REQUIRED)

**50-PS-TEACHING AND TRAINING:** Principles of Education & Training (1 cr.) | Child Development (1 cr.) | Instructional Practices (2 cr.) | Practicum in Education & Training (2 cr.)

Please complete the online application to apply for this program.

## HEALTH SCIENCE ACADEMY (APPLICATION REQUIRED)

**009-STEM- BIOMEDICAL SCIENCE:** Principles of Biomedical Science (1 cr.) | Human Body Systems (1 cr.) | Medical Interventions (1 cr.) | Anatomy & Physiology (1 cr.) + Biomedical Innovations (1cr.)

Please complete the online application to apply for this program.

## PUBLIC SERVICES ENDORSEMENT OPTIONS

**033-PS-HEALTHCARE DIAGNOSTICS & THERAPEUTIC:**

Principles of Health Science (1 cr.) | Medical Terminology (1 cr.) OR DC EMT | Health Science Theory/Health Science Clinical<sup>a</sup> (2 cr.) OR Dual Credit EMT | Practicum in Health Science (2 cr.) AND/OR Anatomy & Physiology<sup>a</sup> (1 cr.) OR Dual Credit EMT

**036-PS-LAW ENFORCEMENT:** Principles of Law, Public Safety, Corrections & Security (1 cr.) | Law Enforcement I (1 cr.) OR Dual Credit Law Enforcement | Law Enforcement II<sup>a</sup> (1 cr.) OR Dual Credit Law Enforcement | Forensic Science<sup>a</sup> (1 cr.) AND/OR Practicum in Law Enforcement<sup>a</sup> (2 cr.) OR Dual Credit Law Enforcement

**84D-PS-JROTC:** ROTC I-Leadership Education 1 (1cr.) | ROTC II-Leadership Education 2 (1cr.) | ROTC III-Leadership Education 3 (1cr.) | ROTC IV-Leadership Education 4 (1cr.)

## STEM ENDORSEMENT OPTIONS (ALGEBRA II, CHEMISTRY & PHYSICS + 5TH MATH + 5TH SCIENCE REQUIRED)

**91D-STEM-MATH:** (5 credits in math)

**92D-STEM-SCIENCE:** (5 credits in Science)

**99D-STEM-COMBINATION:** (5 credits in Math/Science/Engineering)

**047-STEM-PROGRAMMING & SOFTWARE DEVELOPMENT:** Fundamentals of Computer Science (1 cr.) | Game Programming and Design (1 cr.) | Computer Science I (1 cr.) OR OnRamps Computer Science (1 cr.) | Computer Science II (1 cr.)

## SUMMARY OF ENDORSEMENT OPTIONS BY CAMPUS

### ARTS & HUMANITY

PROGRAM OF STUDY	IMPACT	GCM	REL	RSS	SCTHS
Dance	---	X	X	X	---
Language Other Than English	---	X	X	X	---
Music	---	X	X	X	---
Social Studies	---	X	X	X	---
Spanish	---	X	X	X	---
Theatre Arts	---	X	X	X	---
Visual Arts	---	X	X	X	---

### BUSINESS & INDUSTRY

PROGRAM OF STUDY	IMPACT	GCM	REL	RSS	SCTHS
Animal Science <sup>ST</sup>	---	X	X	X	---
Agribusiness	---	AC	---	---	---
Applied Agricultural Engineering <sup>ST</sup>	---	X	X	X	---
Associates of Business	---	AC (DC)	---	---	---
Audio, Video Tech & Film	---	---	---	---	AC (DC)
Automotive Technician	---	---	---	---	AC (DC)
Business Management	---	AC	---	---	---
Collision Repair	---	---	---	---	AC (DC)
Construction	---	X	---	X	---
Culinary Arts	---	---	---	---	AC (DC)
Graphic and Fashion Design (Yearbook)	---	X	X	X	---
HVAC	---	X / DC	X / DC	---	---
IT Networking Systems <sup>ST</sup>	---	---	---	---	AC (DC)
Maritime	---	---	X	---	---
Lodging and Resort Management	---	AC (DC)	---	---	---
Logistics	---	LC	---	---	---
Pipefitting	---	---	---	---	AC (DC)
Plant Science	---	---	---	---	AC
Robotics <sup>ST</sup>	---	---	AC	---	---
Veterinary Assistant <sup>ST</sup>	---	---	---	---	AC
Welding	---	---	---	---	AC (DC)

### MULTIDISCIPLINARY

PROGRAM OF STUDY	IMPACT	GCM	REL	RSS	SCTHS
4X4	X	X	X	X	---
Advanced Course	X	X	X	X	---
College Credit (AP, Dual Credit)	X	X	X	X	---

### PUBLIC SERVICES

PROGRAM OF STUDY	IMPACT	GCM	REL	RSS	SCTHS
Cosmetology	---	---	DC	---	---
Teaching & Training	---	---	---	AC (DC)	---
Healthcare Diagnostics & Therapeutic <sup>ST</sup>	---	X	X	DC	---
Law Enforcement	---	DC	---	X	---
JROTC	---	X	X	X	---

### SCIENCE, TECHNOLOGY, ENGINEERING & MATH (STEM)

PROGRAM OF STUDY	IMPACT	GCM	REL	RSS	SCTHS
Biomedical Science <sup>PS</sup>	---	---	---	AC	---
Combination	---	X	X	X	---
Computer Programming & Software Development <sup>BI</sup>	---	X	X	X	---
Engineering <sup>BI</sup>	---	---	AC	---	---
Instrumentation <sup>BI</sup>	---	---	AC (DC)	---	---
Math	X	X	X	X	---
Science	---	X	X	X	---

**AC**—Courses available to academy students only; application process required in 8th grade; **DC**—College courses offered on campus; application process required before beginning college classes additional college fees may apply; **LC**—Upper level course must be taken at a Lee College campus; application process required before beginning college classes. **BI, PS, ST** = Business & Industry, Public Service or STEM Endorsement is available if requirements are met.