



Goose Creek 2035 Committee

WELCOME FROM YOUR SUPERINTENDENT

Dr. Randal O'Brien
Superintendent



WELCOME FROM DISTRICT LEADERSHIP



Kendall David
Executive Director of
Community Engagement

AGENDA

- WELCOME
- MEETING THREE RECAP
 - OVERALL THEMES
- GALLERY WALK RESULTS/KEY FINDINGS
- THRESHOLDS & PRIORITIZATIONS
- CAMPUS REPURPOSING
 - DISTRICT NEEDS
 - SCHOOL REPURPOSE PLAN
 - CAMPUS CONSIDERATIONS
- REVISIT ONE SENIOR HIGH SCHOOL
- CLOSING



Chairperson: Kristin Sickle

Vice-Chairperson: Briceida Alcaraz

MEETING THREE RECAP

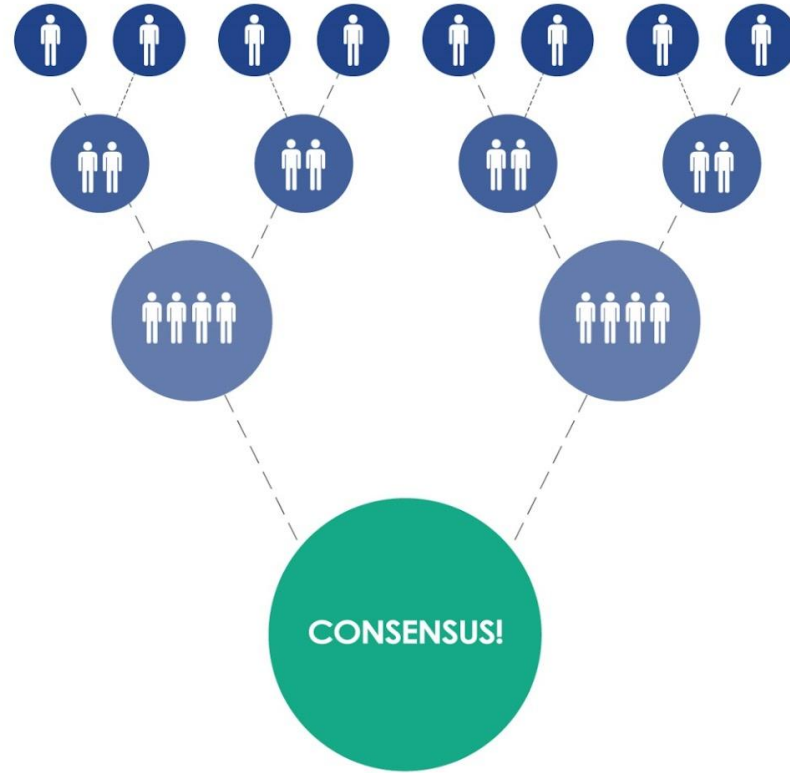
- GC2035 purpose is two-fold, 1) recommend a Long Range Facility Plan for ten years to the Board of Trustees; and 2) provide feedback on rezoning options provided by the demographer and the community rezoning survey results
- Presentation including
 - School Funding Overview
 - School Capacity Methodology
 - Supplemental Material - Capacity, FCI/RI Clarification, Educational Adequacy Assessment
 - High School and District Facility Condition Assessment
 - District Capital Needs - New Construction, Growth-based & Program-based, Department Needs, Gallery Walk
- Questions on these topics were answered at the meeting and parking lots questions were answered via email

CONSENSUS & GRADIENTS OF AGREEMENT

ENDORSEMENT	ENDORSEMENT WITH A MINOR POINT OF CONTENTION	AGREEMENT WITH RESERVATIONS	ABSTAIN	STAND ASIDE	FORMAL DISAGREEMENT, BUT WILLING TO GO WITH THE MAJORITY	FORMAL DISAGREEMENT, WITH REQUEST TO BE ABSOLVED OF RESPONSIBILITY	BLOCK
"I like it."	"Basically, I like it."	"I can live with it."	"I have no opinion."	"I don't like this, but I don't want to hold up the group."	"I want my disagreement noted in writing, but I'll support the decision."	"I don't want to stop anyone else, but I don't want to be involved in implementing it."	"I veto this proposal."

This scale makes it easier for participants to be honest. Using it, members can register less-than-whole hearted support without fearing that their statement will be interpreted as a veto.

CONSENSUS BUILDING MODEL



WHAT WE ARE HEARING GC2035 SAY?

- Concentrate on the current facility needs rather than new district capital needs or programs
- Honor the work of the previous bond committee when prioritizing the Long Range Facilities Plan

| OCTOBER 29, 2024

GC2035 COMMITTEE MEETING NO. 4

GOOSE CREEK CONSOLIDATED ISD



WHO WE ARE



Monika Castillo
Principal-in-Charge



Kevin Worthy
Educational Planner



Paul Buchanan
Project Architect

AGENDA

Introduction

Meeting 3 Gallery Walk

Thresholds & Prioritizations

Campus Repurposing

Revisit One Senior High School

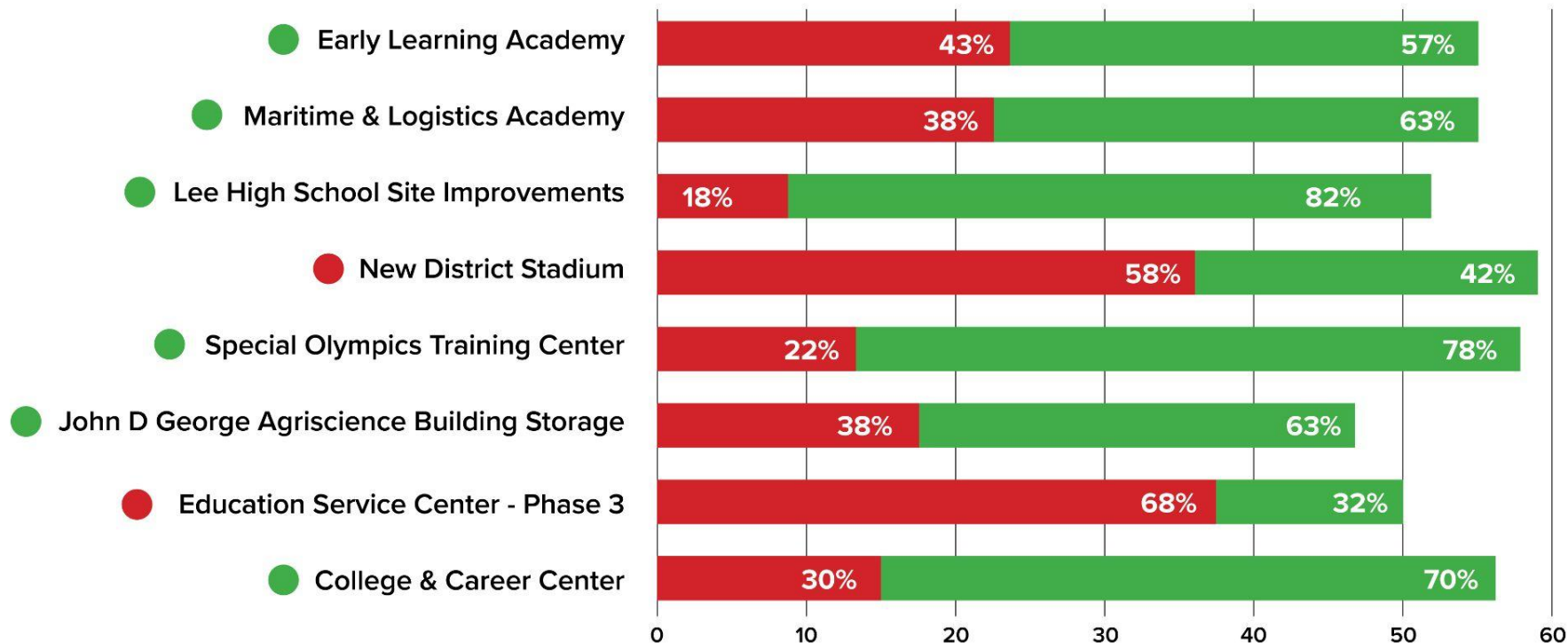
Next Steps

MEETING 3 GALLERY WALK

MEETING 3 GALLERY WALK

Results

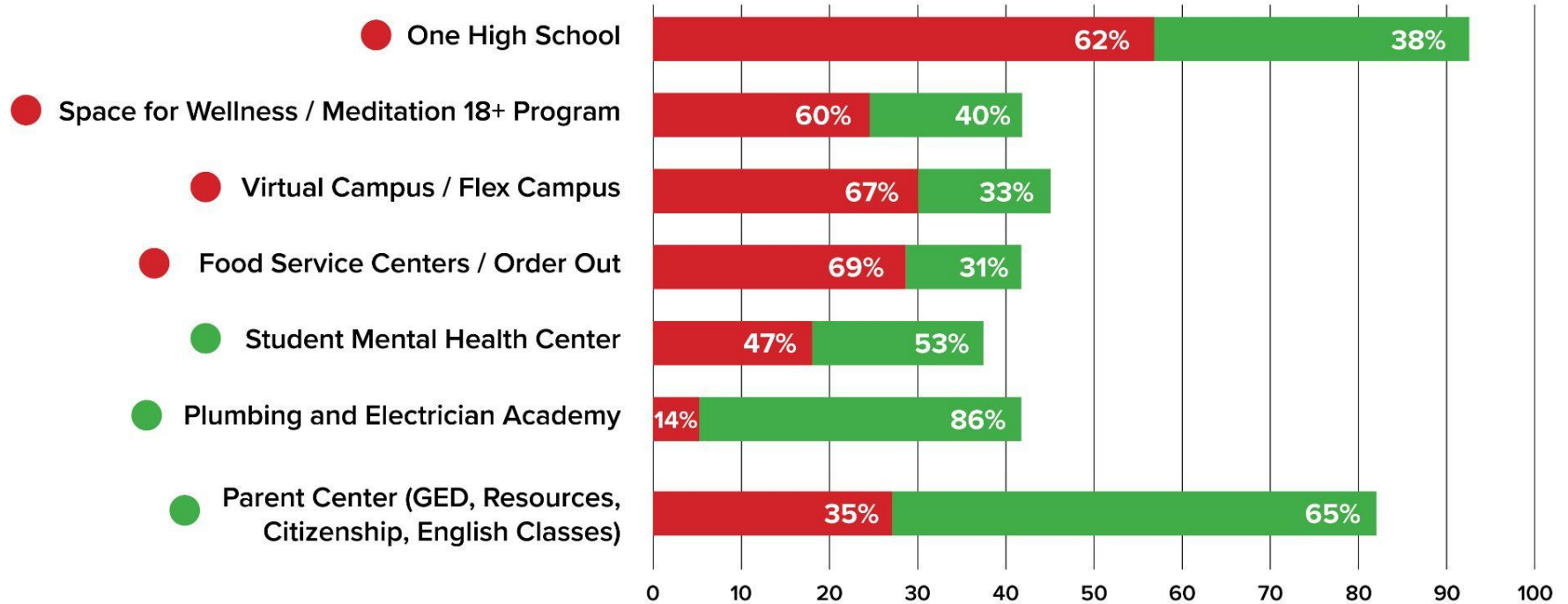
District Capital Project Needs



MEETING 3 GALLERY WALK

Results

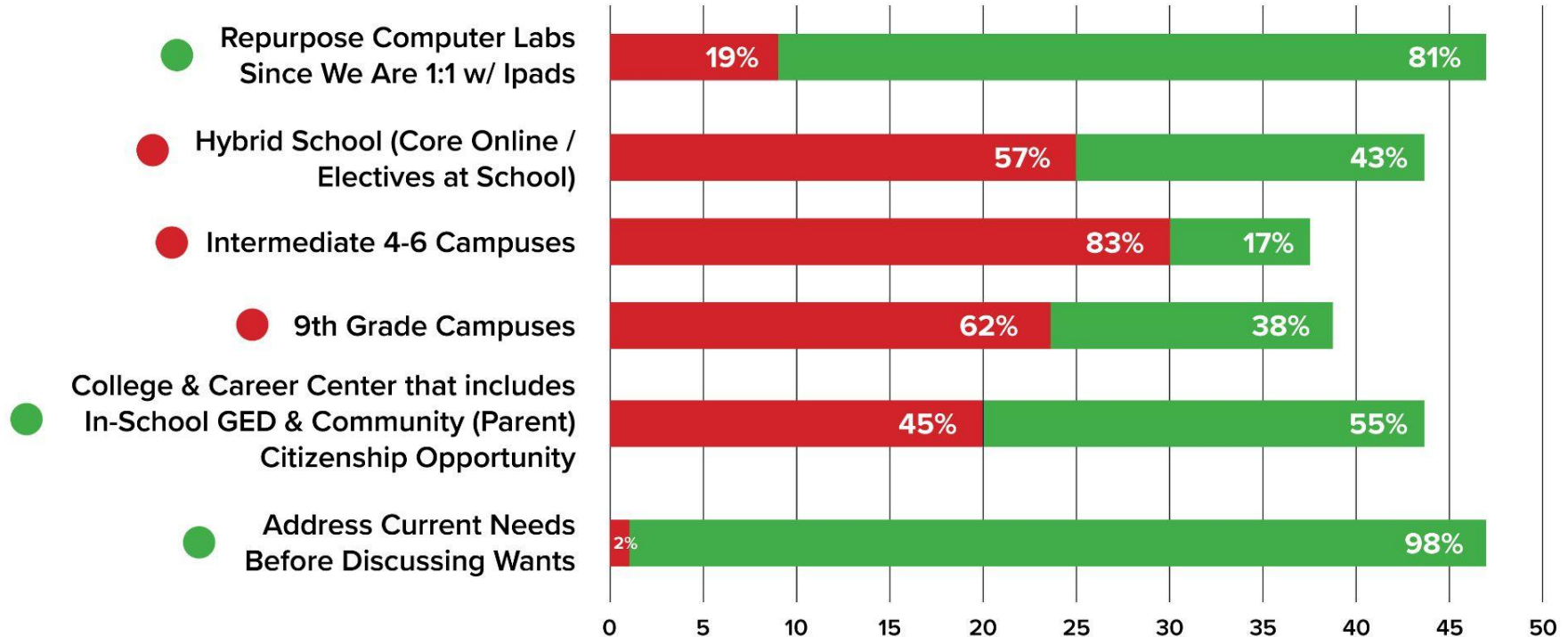
Table-Generated Project Needs



MEETING 3 GALLERY WALK

Results

Table-Generated Project Needs (Continued)



MEETING 3 GALLERY WALK

Key Findings

**Existing Facilities are Priority 1.
“Fix What is Broken”**

THRESHOLDS & PRIORITIZATION

THRESHOLDS & PRIORITIZATION

Approach

Driving Factors

Facility Condition Assessment

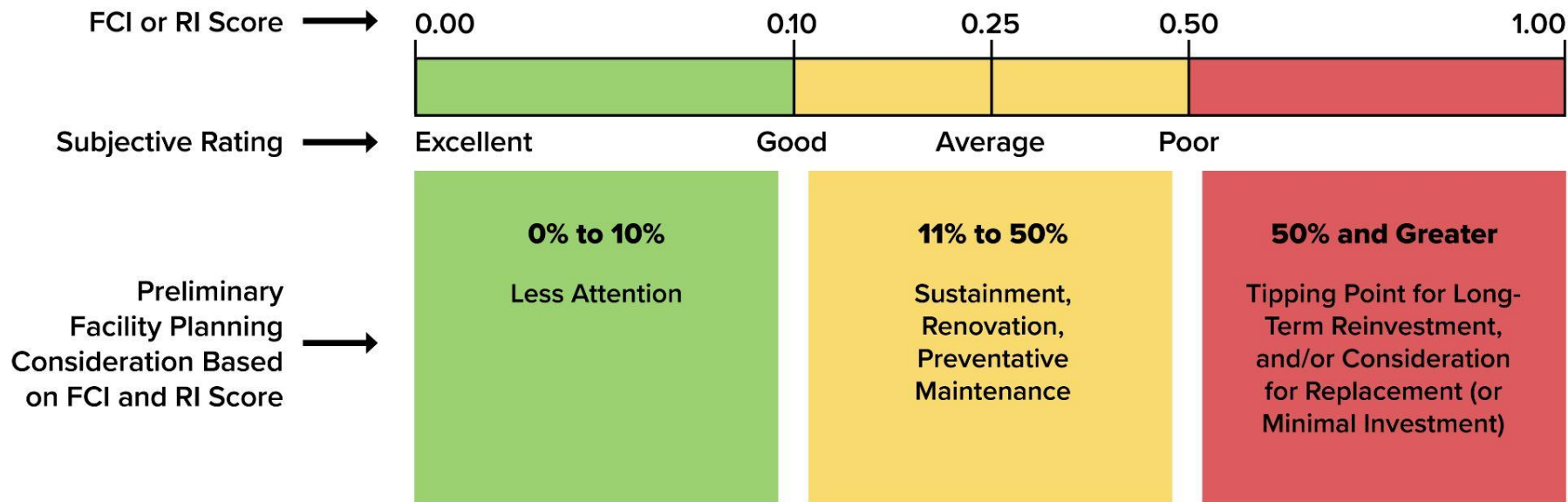
Educational Adequacy Index

Facility Age

THRESHOLDS & PRIORITIZATION

Approach

Facility Condition Assessment



THRESHOLDS & PRIORITIZATION

Approach

Facility Condition Assessment

Campus Type	Campus	Requirement Index (RI)
HS	Ross S. Sterling High School (Natatorium)	0.72
HS	Ross S. Sterling High School (Main Building)	0.59
HS	Ross S. Sterling High School (Vocational/ROTC/Agriculture)	0.59
HS	Ross S. Sterling High School (Grounds Storage Building)	0.57
ES	Crockett Elementary (Main Building)	0.53
ES	Harlem Elementary (Main Building)	0.53
ES	Highlands Elementary (Main Building)	0.51
HS	POINT Alternative School (Old San Jacinto ES) - Main	0.50
HS	Peter E. Hyland Center (Main Building)	0.49
ES	De Zavala Elementary (Main Building)	0.47
ES	Lamar Elementary (Main Building)	0.47

THRESHOLDS & PRIORITIZATION

Approach

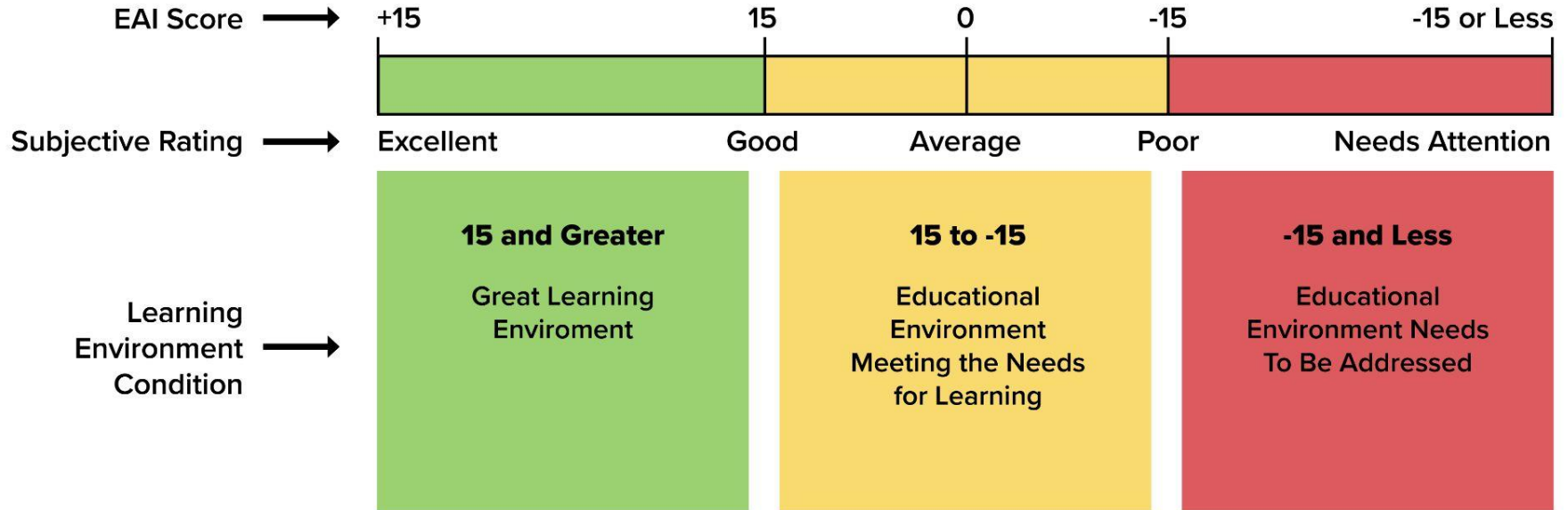
Facility Condition Assessment (Continued)

Campus Type	Campus	Requirement Index (RI)
HS	Ross S. Sterling High School (Ranger Athletics Facility)	.45
HS	Ross S. Sterling High School (Winnie Brown Gym)	.45
CS	Stallworth Stadium (Stadium)	.45
ES	Austin Elementary (Gymnasium)	.42
PM	Hopper Primary (Main Building)	.40
JS	Baytown Junior School (Main Building)	.39
ES	Smith Elementary (Main Building)	.35
CS	GCCISD Facilities Management Center (West Warehouse)	.34
JS	Mann Junior School (Main Building)	.33
ES	Austin Elementary (Main Building)	.32
CS	GCCISD Central Admin (Main Building)	.32
JS	Gentry Junior School (Main Building)	.31

THRESHOLDS & PRIORITIZATION

Approach

Educational Adequacy Index



THRESHOLDS & PRIORITIZATION

Approach

Educational Adequacy Index

Campus Type	Campus	Educational Adequacy Index (EAI)
JS	Gentry Junior School (Main Building)	-39
HS	Ross S. Sterling High School (Main Building)	-36
JS	Mann Junior School (Main Building)	-31
HS	Robert E. Lee High School (Main Building)	-31
JS	Baytown Junior School (Main Building)	-30
JS	Cedar Bayou Junior School (Main Building)	-26
JS	Cedar Bayou Junior School	-26
ES	Crockett Elementary (Main Building)	-24
JS	POINT Alternative School (Old San Jacinto) - Main	-21

THRESHOLDS & PRIORITIZATION

Approach

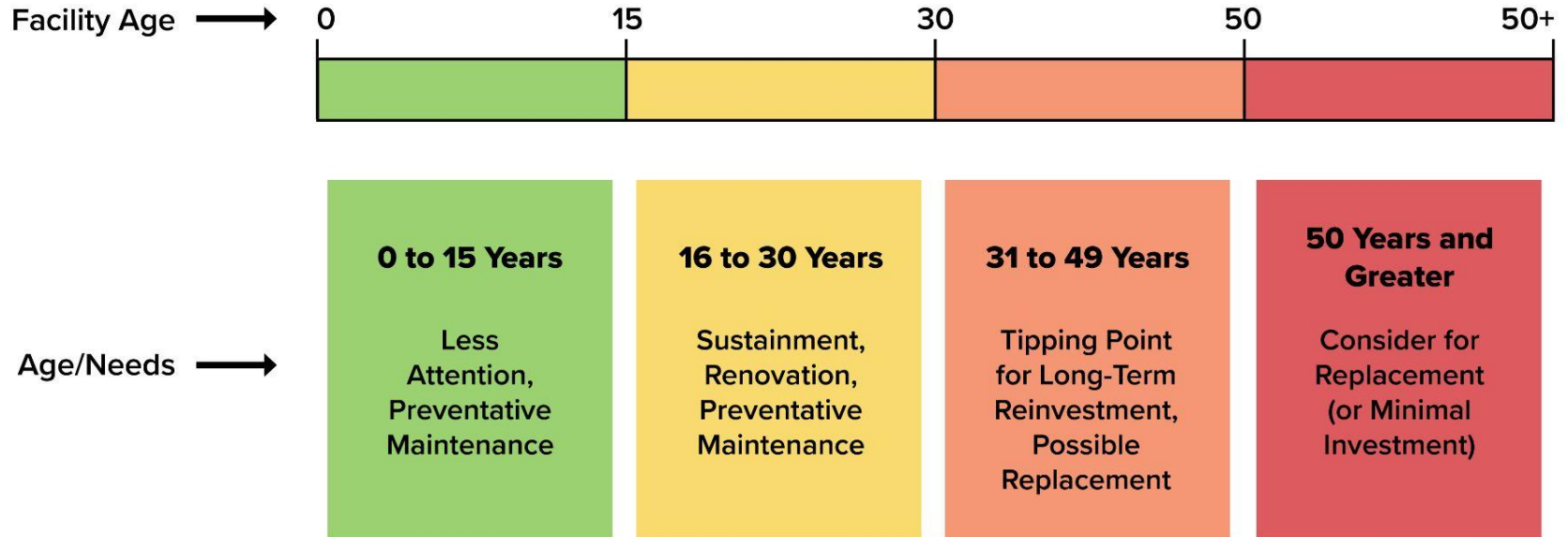
Educational Adequacy Index (Continued)

Campus Type	Campus	Educational Adequacy Index (EAI)
JS	Highlands Junior School (Main Building)	-20
ES	Austin Elementary (Main Building)	-19
ES	Highlands Elementary (Main Building)	-19
ES	Smith Elementary (Main Building)	-18
PM	Hopper Primary (Main Building)	-17
ES	Lamar Elementary (Main Building)	-17
HS	Peter E. Hyland Center (Main Building)	-16
ES	De Zavala Elementary (Main Building)	-15
ES	Harlem Elementary (Main Building)	-15

THRESHOLDS & PRIORITIZATION

Approach

Facility Age



THRESHOLDS & PRIORITIZATION

Approach

Facility Age

Campus Type	Campus	Full Age
HS	Robert E. Lee High School (Main Building)	96
HS	Robert E. Lee High School (Soccer Field House Old FB FH)	76
HS	Robert E. Lee High School (Auditorium)	71
HS	Robert E. Lee High School (Gymnasium/ROTC)	70
HS	Ross S. Sterling High School (Main Building)	58
HS	Ross S. Sterling High School (Vocation/ROTC/Agriculture)	58
HS	Ross S. Sterling High School (Site)	58
CS	Stallworth Stadium (Stadium)	58
HS	Ross S. Sterling High School (Ground Storage Building)	57
ES	Austin Elementary (Gymnasium)	52
ES	Austin Elementary (Site)	52
HS	Ross S. Sterling High School (Natatorium)	50
HS	Ross S. Sterling High School (Winnie Brown Gym)	50
CS	GCCISD Facilities Management Center (Site)	50
CS	GCCISD Facilities Management Center (Main Building)	50
CS	GCCISD Facilities Management Center (West Warehouse)	50

THRESHOLDS & PRIORITIZATION

Approach

Facility Age (Continued)

Campus Type	Campus	Full Age
CS	Hugh Echols Jr. Public Service Center (Main Building)	46
HS	Stuart Career Tech High School (East Building + Addition)	45
HS	Stuart Career Tech High School (West Building)	45
JS	Highlands Junior School (Gymnasium - Abandoned)	45
HS	Robert E. Lee High School (Agriculture Building)	45
JS	Gentry Junior School (Main Building)	44
ES	Crockett Elementary (Main Building)	44
PM	Hopper Primary (Main Building)	44
ES	Crockett Elementary (Site)	44
JS	Gentry Junior School (Site)	44
HS	Robert E. Lee High School (BB & Track Field House)	44
HS	Ross S. Sterling High School (Agriculture Shop)	43
JS	Baytown Junior School (Main Building)	42
JS	Cedar Bayou Junior School	42

THRESHOLDS & PRIORITIZATION

Approach

Facility Age (Continued)

Campus Type	Campus	Full Age
HS	POINT Alternative School (Old San Jacinto ES) - Main	42
JS	Baytown Junior School (Site)	42
CS	GCCISD Central Admin (Main Building)	40
CS	GCCISD Central Admin (Site)	40
JS	Mann Junior School (Main Building)	32
ES	Highlands Elementary (Main Building)	32
ES	De Zavala Elementary (Main Building)	32
ES	Harlem Elementary (Main Building)	32
ES	De Zavala Elementary (Site)	32
ES	Harlem Elementary (Site)	32
ES	Highlands Elementary (Site)	32
JS	Mann Junior School (Site)	32
HS	Robert E. Lee High School (New Football Field House)	32

THRESHOLDS & PRIORITIZATION

Proposed Thresholds

Driving Factors

Proposed
Thresholds

Facility Condition Assessment

$\geq .3$

Educational Adequacy Index

≤ -15

Facility Age

≥ 30

THRESHOLDS & PRIORITIZATION

Proposed Thresholds

PROPOSED THRESHOLDS

$$RI \geq .3$$

$$EAI \leq -15$$

$$AGE \geq 30$$

EDUCATIONAL FACILITIES

Campus Type	Campus	Full Age	RI	EAI
HS	Ross S. Sterling High School (Main Building)	58	0.59	-36
ES	Crockett Elementary (Main Building)	44	0.53	-24
ES	Harlem Elementary (Main Building)	32	0.53	-15
ES	Highlands Elementary (Main Building)	32	0.51	-19
HS	POINT Alternative School (Old San Jacinto ES) - Main	42	0.5	-21
ES	De Zavala Elementary (Main Building)	32	0.47	-15
PM	Hopper Primary (Main Building)	44	0.4	-17
JS	Baytown Junior School (Main Building)	42	0.39	-30
JS	Mann Junior School (Main Building)	32	0.33	-31
JS	Gentry Junior School (Main Building)	44	0.31	-39

THRESHOLDS & PRIORITIZATION

Proposed Thresholds

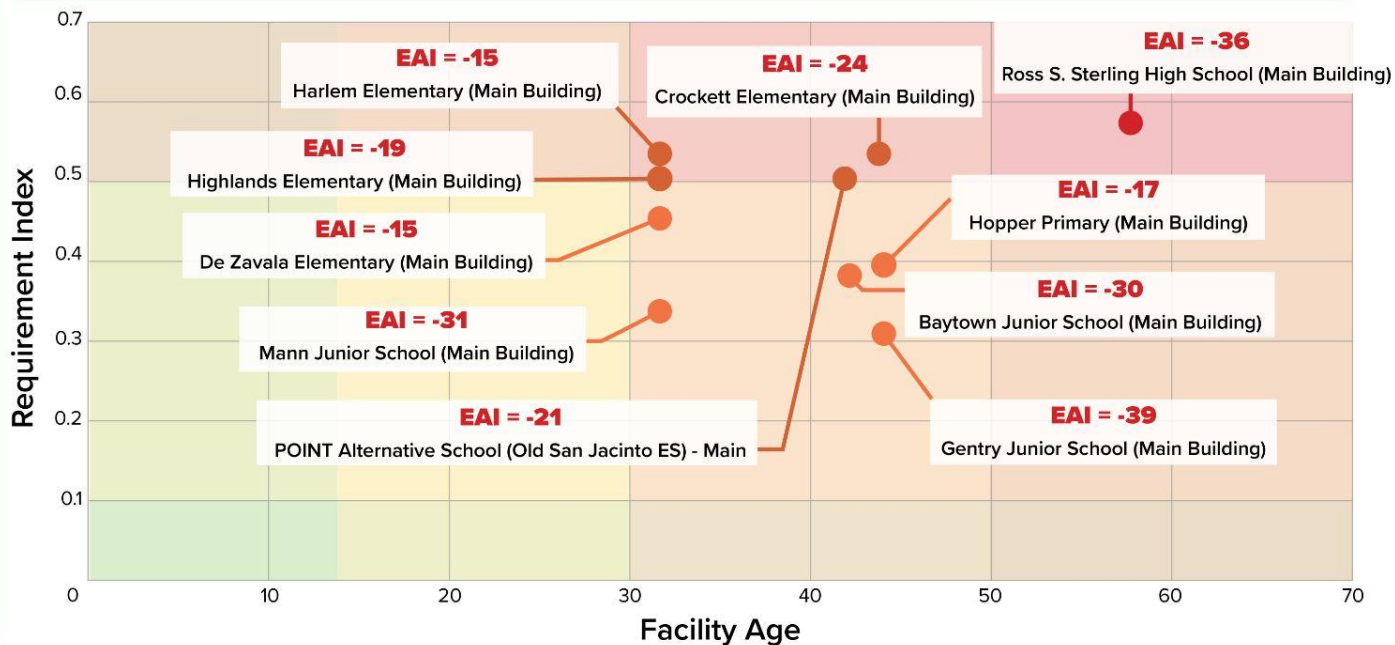
PROPOSED THRESHOLDS

$$RI \geq .3$$

$$EAI \leq -15$$

$$AGE \geq 30$$

EDUCATIONAL FACILITIES



THRESHOLDS & PRIORITIZATION

Proposed Thresholds

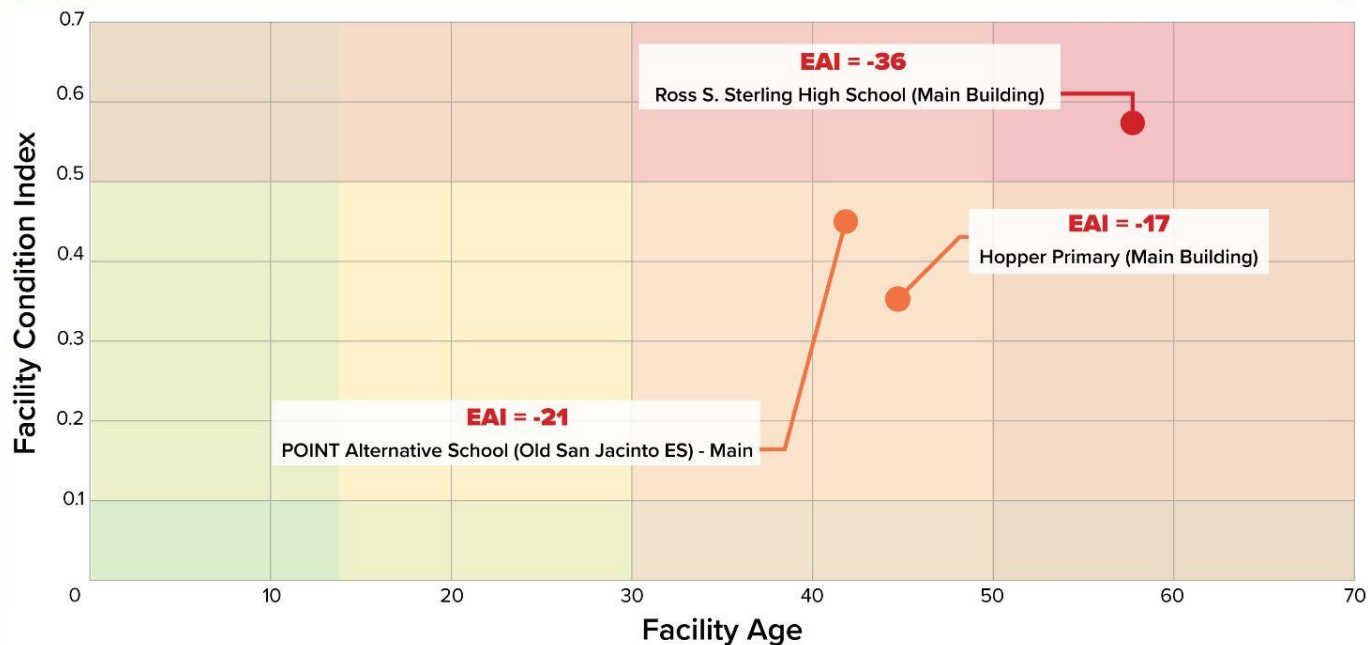
PROPOSED THRESHOLDS

$$FCI \geq .3$$

$$EAI \leq -15$$

$$AGE \geq 30$$

EDUCATIONAL FACILITIES



THRESHOLDS & PRIORITIZATION

Proposed Thresholds

PROPOSED THRESHOLDS

$$RI \geq .3$$

$$AGE \geq 30$$

EDUCATIONAL SUPPORT FACILITIES AND DISTRICT SUPPORT FACILITIES

Campus Type	Campus	Full Age	RI
HS	Ross S. Sterling High School (Natatorium)	50	0.72
HS	Ross S. Sterling High School (Vocation/ROTC/Agriculture)	58	0.59
HS	Ross S. Sterling High School (Ground Storage Bldg)	57	0.57
CS	Stallworth Stadium (Stadium)	58	0.45
HS	Sterling High School (Winne Brown Gym)	50	0.45
ES	Austin Elementary (Gymnasium)	52	0.42
CS	GCCISD Facilities Management Center (West Warehouse)	50	0.336
CS	GCCISD Central Admin (Main Building)	40	0.317

THRESHOLDS & PRIORITIZATION

Proposed Thresholds

PROPOSED THRESHOLDS

$$RI \geq .3$$

$$AGE \geq 30$$

EDUCATIONAL SUPPORT FACILITIES AND DISTRICT SUPPORT FACILITIES

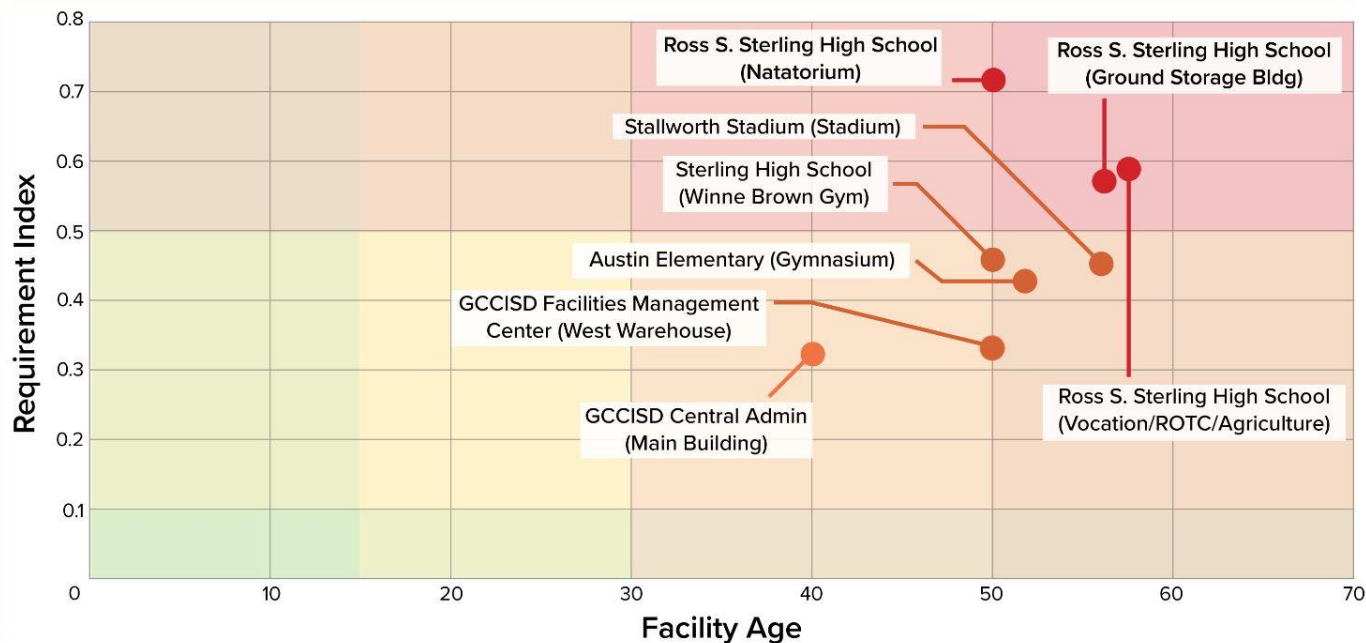


TABLE TALK

CAMPUS REPURPOSING

CAMPUS REPURPOSING

District Needs and Benefits

District Needs:

- Increase in intervention program due to new TEA requirements.

Benefits of Relocation:

- **Cost Efficiency:** The current building (Old San Jacinto Elementary) has ongoing issues, such as unreliable air conditioning and outdated infrastructure, which are expensive and inefficient to maintain. The new location will reduce maintenance costs and provide a more sustainable solution.
- **Enhanced Learning Environment:** The Consolidated Campus offers a more conducive space that supports effective learning and student success.

CAMPUS REPURPOSING

Campus Considerations

- **Point Alternative Center** - Campus to provide holistic behavioral environment that includes academic and social growth of at-risk students.
 - Current Enrollment: 132
 - 2034 Projected Enrollment: 129
- **Peter E. Hyland Center** - Alternative educational environment for students facing challenges in traditional school settings and houses District daycare for staff and students.
 - Current Enrollment: 113
 - 2034 Projected Enrollment: 121
- **Other:** - Virtual Academy
Possible Intervention Center

CAMPUS REPURPOSING

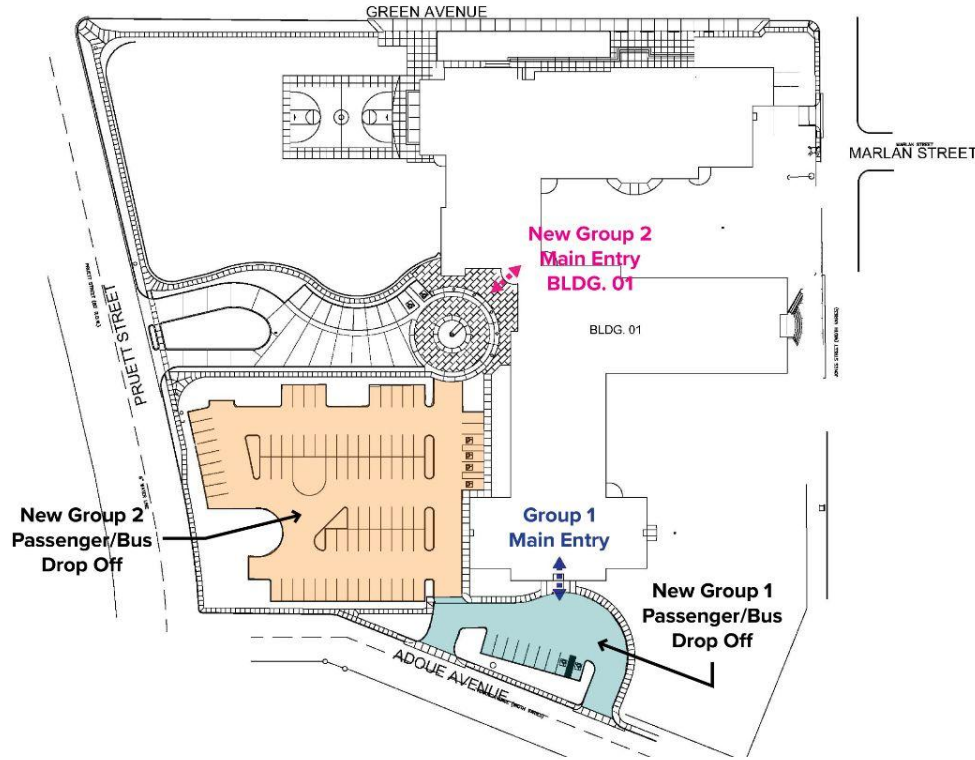
Campus Considerations

- **Lamar Elementary School**
- **Ashbel Smith Elementary School**

Two-Story considerations for flexible space utilization to accommodate the district's evolving needs

CAMPUS REPURPOSING

Lamar Elementary School



Pros - Site

- Easy control of separate site access

Cons - Site

- Residential street traffic

LAMAR ELEMENTARY SITE

NOT TO SCALE



Group 1 Path
Of Travel

Group 1
Wing

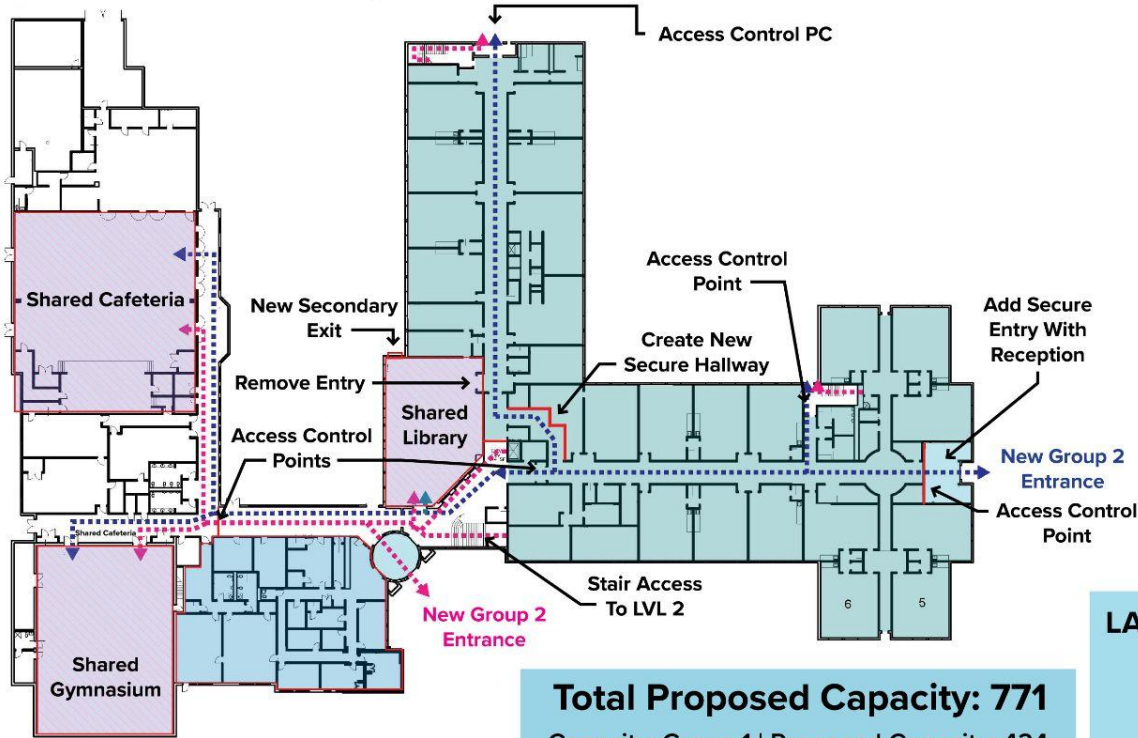


Group 2 Path
Of Travel

Group 2
Wing

CAMPUS REPURPOSING

Lamar Elementary School



Total Proposed Capacity: 771

Capacity: Group 1 | Proposed Capacity: 424

Capacity: Group 2 | Proposed Capacity: 347

Pros - Site

- Two story maximizes separation for student groups
- Separate entrance achievable with minor modifications.
- Separate restroom facilities (per floor)
- Separate egress available from 2nd floor

Cons - Site

- Shared spaces will require controlled path of travel
- New entrance will require new reception area
- Restroom fixtures will require replacement

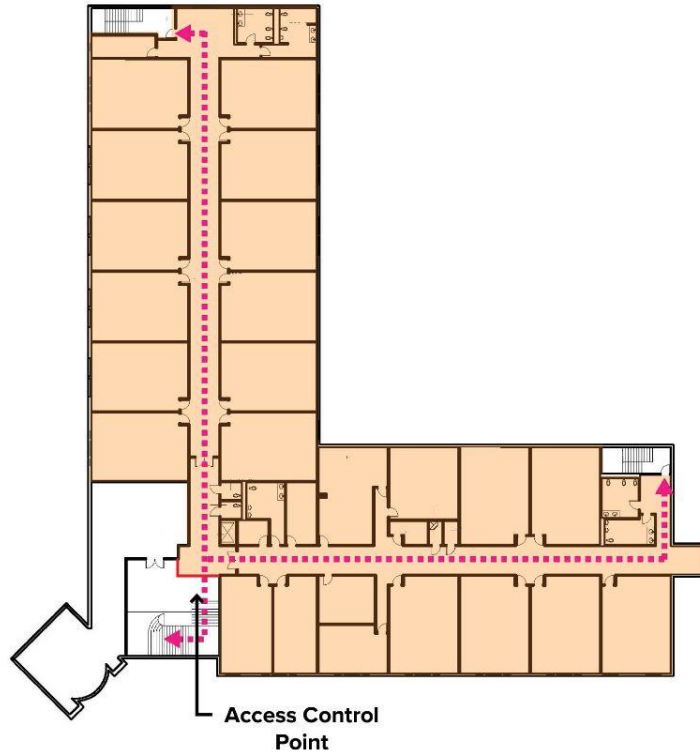
LAMAR ELEMENTARY - FIRST FLOOR (GROUP 1)

NOT TO SCALE



CAMPUS REPURPOSING

Lamar Elementary School



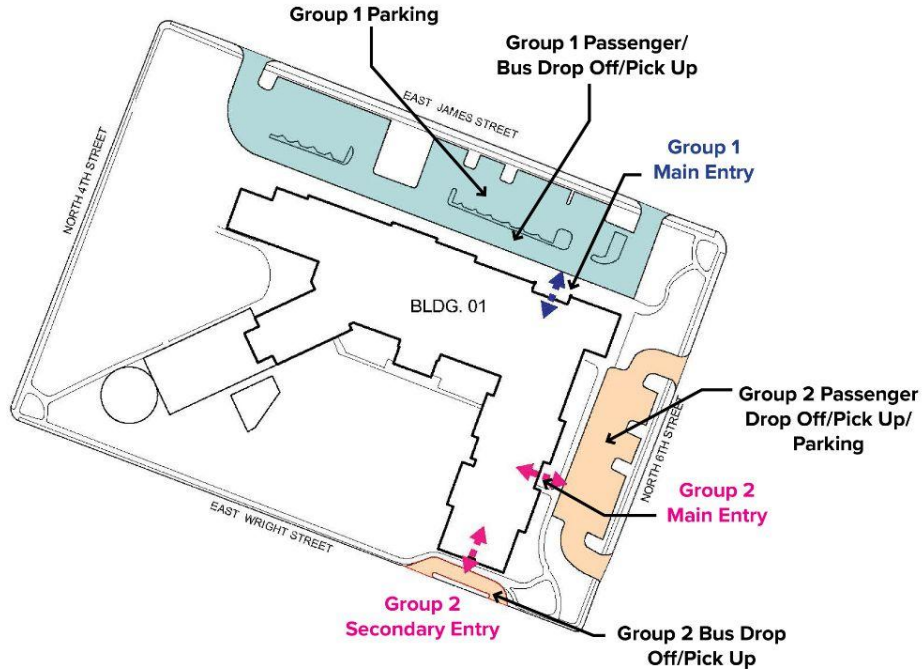
LAMAR ELEMENTARY - SECOND FLOOR (GROUP 2)

NOT TO SCALE



CAMPUS REPURPOSING

Ashbel Smith Elementary School



Pros - Site

- Easy control of separate site access
- Separate bus/passenger drop off

Cons - Site

- Residential street traffic

ASHBEL SMITH ELEMENTARY SITE

NOT TO SCALE

---> Group 1 Path
Of Travel

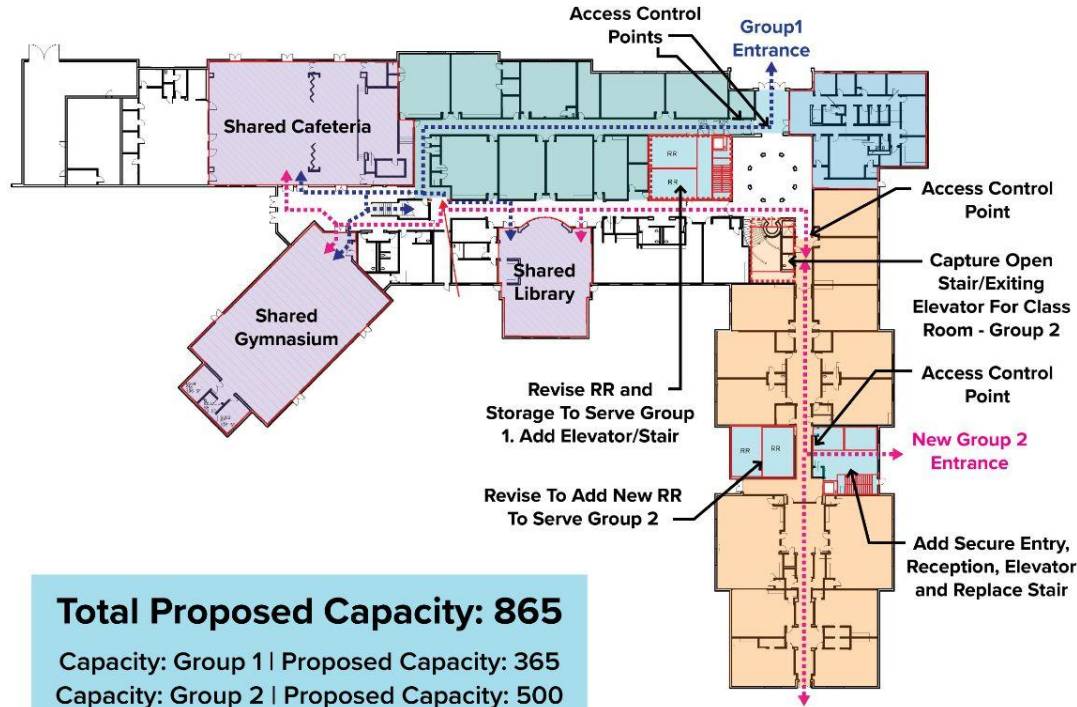
Group 1
Wing

---> Group 2 Path
Of Travel

Group 2
Wing

CAMPUS REPURPOSING

Ashbel Smith Elementary School



Total Proposed Capacity: 865

Capacity: Group 1 | Proposed Capacity: 365

Capacity: Group 2 | Proposed Capacity: 500

Pros - Site

- Separate entrance achievable with modification to east side
- Separate wings allow for separation of student groups

Cons - Site

- Shared spaces will require controlled path of travel
- New reception, stair and elevator will be required
- Central stair and elevator will need to be controlled or eliminated
- Restroom fixtures will require replacement

Total Functional Capacity: 865

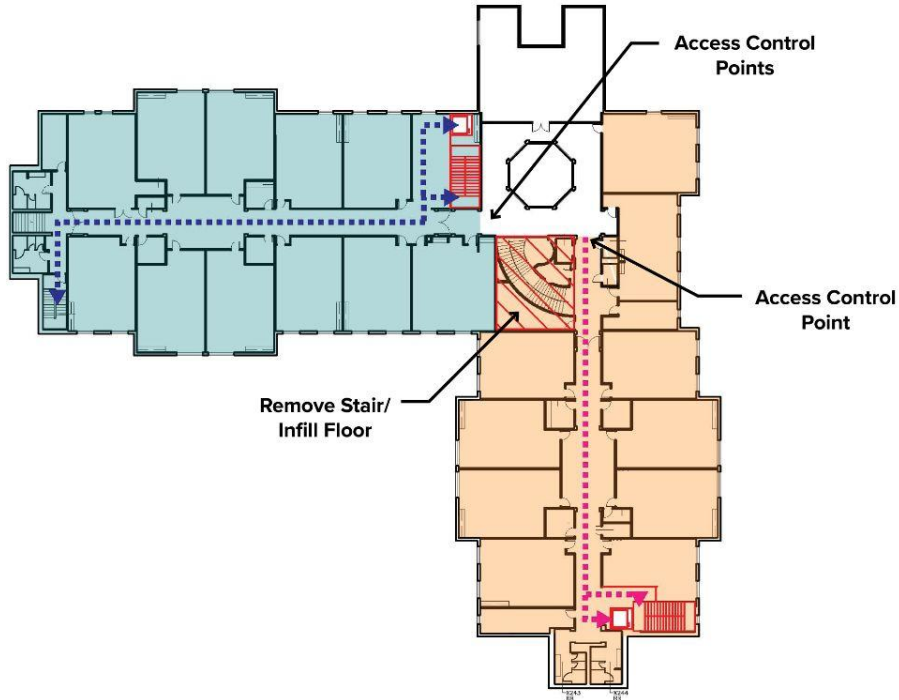
ASHBEL SMITH ELEMENTARY - FIRST FLOOR (GROUP 1 & 2)

NOT TO SCALE



CAMPUS REPURPOSING

Ashbel Smith Elementary School



ASHBEL SMITH ELEMENTARY - SECOND FLOOR (GROUP 1 & 2)

NOT TO SCALE

---> Group 1 Path
Of Travel

Shared
Spaced

Group 1
Wing

---> Group 2 Path
Of Travel

Admin
Area

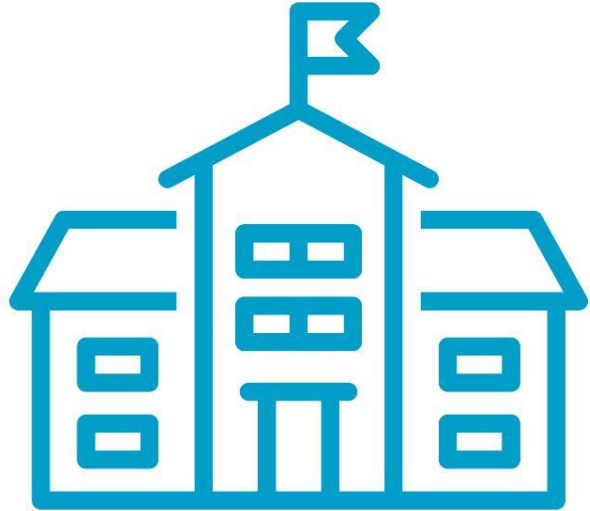
Group 2
Wing

TABLE TALK

REVISIT ONE SENIOR HIGH SCHOOL

TABLE TALK

REVISIT ONE SENIOR HIGH SCHOOL



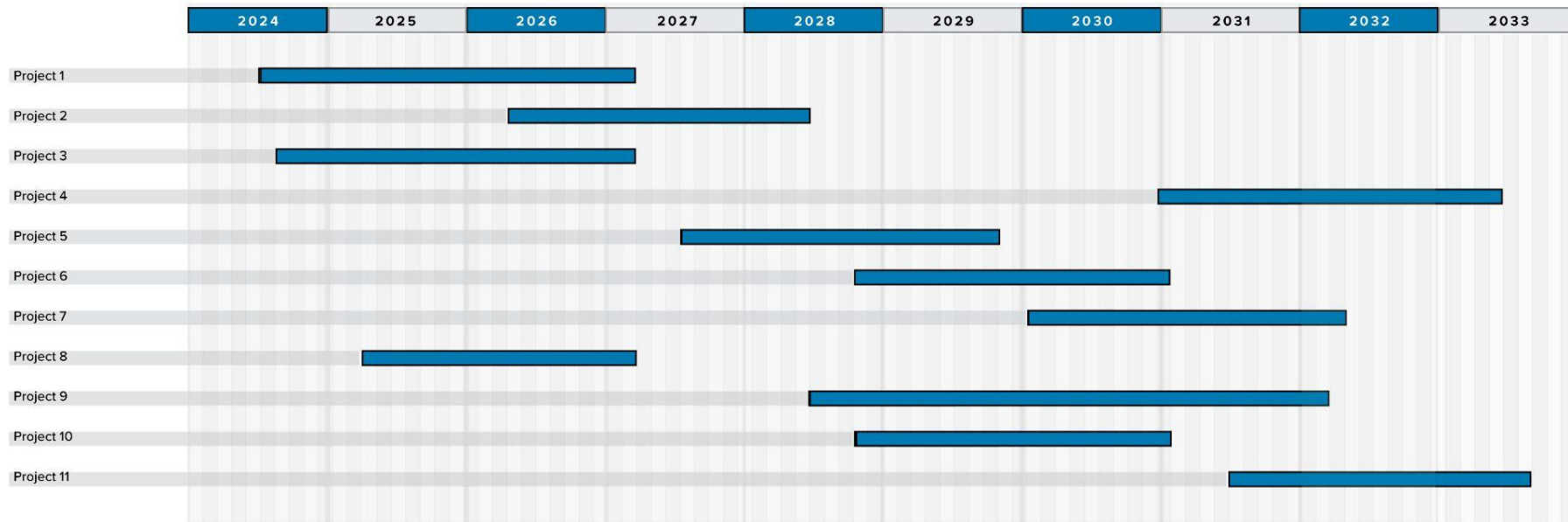
- One (1) Senior High School Campus (11th - 12th Grade)
- Two (2) 9th-10th Campuses
- Three (3) Junior Schools will feed into each of the 9th - 10th Grade Campuses

NEXT STEPS

| MEETING NO. 5 | NOVEMBER 19, 2024

LONG RANGE FACILITY PLANNING

Timeline



PROJECT SCHEDULE

THANK YOU!

TELLING THE STORY....



**Offer up any
Likes and
Wishes to
assist us in
improving
each meeting**

November 19, 2024

5:30 pm Light Refreshments
6pm-8pm Meeting

Robert E Lee High School

